

PRESUPUESTO

ITEM	MARCA	DESCRIPCION	MODELO	CANT	UNID	UNIT PRICES	SUB TOTAL	TOTAL
A		EQUIPOS DE SEGURIDAD						
1		CENTRO DE CONTROL DE SEGURIDAD						
		CCTV - SISTEMA DE ADMINISTRACION DE VIDEO						
		SERVIDOR DE GESTION						
	BOSCH	VIDOS SERVER BASE PACK WITH 10 CAMERAS LICENSE	VIDOSSVR10CAM	1,00	U	2.651,59	2.651,59	
	BOSCH	VIDOS SERVER UPGRADELICENSE BY 250 CAMERAS	VIDOSSVR250CA	1,00	U	19.880,65	19.880,65	
	BOSCH	VIDOS CLIENT LICENSE PER PC W/W CAMERAS 10-PACK	VIDOSCL-10P	1,00	U	2.324,86	2.324,86	
	BOSCH	VIDOS-NVR RACKMOUNT SERVER	MHV-SM4M1-US	1,00	U	6.723,23	6.723,23	31.580,33
		SOFTWARE DE GRABACION						
	BOSCH	VIDOS-NVR SOFTWARE LICENSE TO RECORD UP TO 64, 32 CHANNELS	MVC-BNVR064C	1,00	U	4.524,04	4.524,04	
	BOSCH	VIDOS-NVR RACKMOUNT SERVER, PRICE EXCLUDING VIDOS-NVR SOFTWARE	MHW-SM5M2-US	1,00	U	7.061,59	7.061,59	
	BOSCH	RAID 5 ARRAY 3.0 TB WITH 12 HDDS	DVA-08K-04050RA	1,00	U	16.769,85	6.990,00	18.575,64
		CONSOLA DE MONITOREO						
	BOSCH	VIDOS LICENSE FOR 1 PC TO MANAGE UPTO 32 CAMERAS	VIDOS32CH-10P	1,00	U	1.482,88	1.482,88	
	BOSCH	CONTROL KEYBOARD FOR AUTODOMES	KBD-UNIVERSAL	2,00	U	1.111,16	2.222,31	
	BOSCH	POWER SUPPLY 220VAC, 15VDC 9VA OUTPUT	TC220PS	2,00	U	31,42	62,83	
	BOSCH	VIDOS INTUIKEY LICENSE PER KEYBOARD	VIDOSKBD-5P	2,00	U	238,77	477,54	
	DELL	Monitor, 27" high performance LCD. 100~240VAC 50/60Hz.	2707WFP	2,00	U	2.300,00	4.600,00	
	BOSCH	PRECONFIGURED TOWER PC WORKSTATION	MHW-W66M2-US	2,00	U	3.518,70	7.037,40	15.882,97
		ALARMAS- SISTEMA DE MONITOREO Y ADMINISTRACION						
	BOSCH	BIS-SEE Paquete Básico, 2 Centr. Serie G, 1 Recept.,Ingles	BIS-SEE-BPEN	1,00	U	423,94	423,94	
	BOSCH	BIS-Visualización de Planes de Acción	BIS-GEB-	1,00	U	146,57	146,57	
	BOSCH	BIS-Visualización de Documentos Misceláneos	BIS-GEN-	1,00	U	879,23	879,23	
	BOSCH	BIS-Control de Capas	BIS-GEN-LAYER	1,00	U	1.159,96	1.159,96	
	BOSCH	BIS-Monitor General de Dispositivos	BIS-GEN-	1,00	U	146,57	146,57	
	BOSCH	BIS-Administración de Acciones/Eventos	BIS-GEN-ACTMGR	1,00	U	146,57	146,57	
	BOSCH	BIS-SEE Expansion 500 Cuentas IP adic.x p/D6600	BIS-SEE-AC500	1,00	U	2.929,13	2.929,13	5.831,96
		EQUIPOS - TELECOMUNICACIONES						
	MRV	MRV SW.OPTICO 9012-10Gx 1-10GbE_DFSM XFP 10GbE_SFSM SFP		2,00	U	3.425,40	6.850,80	
	MRV	SOFTWARE DE GESTION DE CONVESORES DE FIBRA OPTICA		1,00	U	6.833,63	6.833,63	
	MRV	SOFTWARE DE GESTION DE RED INALAMBRICA		1,00	U	5.556,69	5.556,69	19.241,13
2		OFICINAS ADMINISTRATIVAS						
		CCTV - EQUIPOS						
		ACCESORIOS RED - EQUIPOS E INTEGRACION						
	BOSCH	BASE SYSTEM, 4 SLOTS	VIPX1600BASE	2,00	U	729,84	1.459,69	
	BOSCH	FOUR CHANNEL MODULE, W/AUDIO	VIPX1600M4SA	4,00	U	1.178,98	4.715,93	
	BOSCH	POWER SUPPLY	VIP1600PS	2,00	U	140,36	280,71	6.456,33
		CAMARA FIJA EXTERIOR						
	BOSCH	CAMERA, HIGH PERFORMANCE, Day/Night, 1/3-inch 540 TVL COLOR, DSP, 12VDC/24VAC, 60Hz	LTC0495/21	6,00	U	438,50	2.631,00	
	BOSCH	CS LENS, 1/3-INCH, 3.5 TO 8mm, DIRECT DRIVE, f/1.4 TO f/360, 4 PIN.	LTC 3364/60	6,00	U	54,10	324,62	
	BOSCH	POWER SUPPLY 220/24VAC, 20VA	TC220PSX-24	6,00	U	18,85	113,08	
	BOSCH	HOUSING, OUTDOOR (NEMA 4), FOR CAMERA/LENS TO 14-INCH, 24VAC, 50/60Hz HEATER/BLOWER	HSG9483/21	6,00	U	138,24	829,42	
	BOSCH	MOUNT, FEED-THRU, 12-INCH, FOR LTC 9480 SERIES HOUSINGS.	LTC 9215/00	6,00	U	27,65	165,89	4.064,01
		CAMARA MOVIL EXTERIOR						
	BOSCH	ENVIRODOME KIT, 26X, OUTDOOR PENDANT, POLE MOUNT	VG4-323-ECS0M	3,00	U	1.988,38	5.965,14	
	BOSCH	CLEAR BUBLE, RUGGED VERSION		3,00	U	188,50	565,50	
	BOSCH	TRANSFORMER, OUTDOOR NEMA4X	VG4-PSU2	3,00	U	125,67	377,01	6.907,65
		SENSORES PROTECCION DE CAMARAS EXTERIORES						
	SIEMENS	Outdoor PIR detector 18m volumetric	IS390	9,00	U	361,63	3.254,63	3.254,63
		ALARMAS - EQUIPOS						
	BOSCH	Central de Intrusión, Acceso e Incendio, 75 Zonas	D7412G	1,00	U	206,24	206,24	
	BOSCH	Teclado Alfanumérico Fluror., 16 car., beige	D1255B	1,00	U	65,55	65,55	
	BOSCH	Modulo p/Red de Centrales BSS y PC9000	DX4020	1,00	U	351,91	351,91	
	BOSCH	Módulo Expansor	D8129	1,00	U	33,10	33,10	
	BOSCH	Módulo de Direccionamiento de Zona	D9127U	14,00	U	8,83	123,56	
	BOSCH	Transformador 16VAC	D1640	1,00	U	9,94	9,94	
	BOSCH	Batería 12 VDC, 7 Ah	D1260BLK	1,00	U	19,35	19,35	
	BOSCH	Gabinete Universal	D8103	1,00	U	32,64	32,64	
	BOSCH	Cerradura para Gabinete	D101	1,00	U	2,45	2,45	
		CONTACTO MAGNETICO PESADO	SM226L	11,00	U	15,69	172,62	

PRESUPUESTO

ITEM	MARCA	DESCRIPCION	MODELO	CANT	UNID	UNIT PRICES	SUB TOTAL	TOTAL
	FEDERAL	Strobe, 12-24VDC, pipe mount, clear	FB2PST-I-024C	3,00	U	242,43	727,28	
	FEDERAL	Mounting kit, wall mount	LWMB2	3,00	U	55,41	166,24	
	FEDERAL	Siren, electronic, multi-voltage	300GC-024	3,00	U	367,36	1.102,08	
		EQUIPOS - TELECOMUNICACIONES						3.012,96
	MRV	MRV SW.OPTICO 9012-M 1-GbE_SF5M SFP 03-GbE_DF5M SFP		2,00	U	3.425,40	6.850,80	6.850,80
3		ALMACEN CENTRAL						
		CCTV - EQUIPOS						
		ACCESORIOS RED CCTV - EQUIPOS						
	BOSCH	BASE SYSTEM, 4 SLOTS	VIPX1600BASE	1,00	U	729,84	729,84	
	BOSCH	FOUR CHANNEL MODULE, W/AUDIO	VIPX1600M4SA	3,00	U	1.178,98	3.536,95	
	BOSCH	POWER SUPPLY	VIP1600PS	1,00	U	140,36	140,36	
		CAMARA FIJA EXTERIOR						4.407,15
	BOSCH	CAMERA, HIGH PERFORMANCE, Day/Night, 1/3-inch 540 TVL COLOR, DSP, 12VDC/24VAC 60Hz	LTC-0495-21	2,00	U	438,50	877,00	
	BOSCH	CS LENS, 1/3-INCH, 3.5 TO 8mm, DIRECT DRIVE, f/1.4 TO f/360, 4 PIN.	LTC 3364/60	2,00	U	54,10	108,21	
	BOSCH	POWER SUPPLY 220/24VAC, 20VA	TC220PSX-24	2,00	U	18,85	37,69	
	BOSCH	HOUSING, OUTDOOR (NEMA 4), FOR CAMERA/LENS TO 14-INCH, 24VAC, 50/60Hz HEATER/BLOWER	HSG9483/21	2,00	U	138,24	276,47	
	BOSCH	MOUNT, FEED-THRU, 12-INCH, FOR LTC 9480 SERIES HOUSINGS.	LTC 9215/00	2,00	U	27,65	55,30	
		CAMARA MOVIL EXTERIOR						1.354,67
	BOSCH	ENVIRODOME KIT, 26X, OUTDOOR PENDANT, POLE MOUNT	VG4-323-ECS0M	3,00	U	1.988,38	565,50	
	BOSCH	CLEAR BUBLE, RUGGED VERSION		3,00	U	188,50	377,01	
	BOSCH	TRANSFORMER, OUTDOOR NEMA4X	VG4-PSU2	3,00	U	125,67		942,50
		SENSORES PROTECCION DE CAMARAS EXTERIORES						
	SIEMENS	Outdoor PIR detector 18m volumetric	IS390	9,00	U	361,63	3.254,63	3.254,63
		ALARMAS - EQUIPOS						
	BOSCH	Central de Intrusión, Acceso e Incendio, 75 Zonas	D7412G	1,00	U	206,24	206,24	
	BOSCH	Teclado Alfanuérico Fluror., 16 car., beige	D1255B	1,00	U	65,55	65,55	
	BOSCH	Modulo p/Red de Centrales BSS y PC9000	DX4020	1,00	U	351,91	351,91	
	BOSCH	Módulo Expansor	D8129	1,00	U	33,10	33,10	
	BOSCH	Módulo de Direccionamiento de Zona	D9127U	15,00	U	8,83	132,38	
	BOSCH	Transformador 16VAC	D1640	1,00	U	9,94	9,94	
	BOSCH	Batería 12 VDC, 7 Ah	D1260BLK	1,00	U	19,35	19,35	
	BOSCH	Gabinete Universal	D8103	1,00	U	32,64	32,64	
	BOSCH	Cerradura para Gabinete	D101	1,00	U	2,45	2,45	
		CONTACTO MAGNETICO PESADO						
			SM226L	12,00	U	15,69	188,31	
	FEDERAL	Strobe, 12-24VDC, pipe mount, clear	FB2PST-I-024C	3,00	U	242,43	727,28	
	FEDERAL	Mounting kit, wall mount	LWMB2	3,00	U	55,41	166,24	
	FEDERAL	Siren, electronic, multi-voltage	300GC-024	3,00	U	367,36	1.102,08	
		ALARMAS - EQUIPOS						3.037,48
	SIEMENS	Outdoor intelligent quad active IR beams 100m	IS444	1,00	U	422,46	422,46	
		Pole mounting cover for IS443/IS444/IS445 beams	BP-200F	1,00	U	20,54	20,54	
		Heater for IS443 / IS444 / IS445 beams	HTF-24	1,00	U	86,38	86,38	
		EQUIPOS - TELECOMUNICACIONES (Almacen, Data Center)						
	MRV	MRV SWITCH OPTICO 912 1-GbE_SF5M SFP 3GbE_SF5M SFP		1,00	U	3.425,40	3.425,40	3.425,40
4		POZAS DE LXIVIACION - SOLUCION RICA				0,00	0,00	
		ACCESORIOS RED CCTV - EQUIPOS						
	BOSCH	BASE SYSTEM, 4 SLOTS	VIPX1600BASE	1,00	U	729,84	729,84	
	BOSCH	FOUR CHANNEL MODULE, W/AUDIO	VIPX1600M4SA	3,00	U	1.178,98	3.536,95	
	BOSCH	POWER SUPPLY	VIP1600PS	1,00	U	140,36	140,36	
		CAMARA FIJA EXTERIOR						4.407,15
	BOSCH	CAMERA, HIGH PERFORMANCE, Day/Night, 1/3-inch 540 TVL COLOR, DSP, 12VDC/24VAC 60Hz	LTC-0495-21	4,00	U	438,50	1.754,00	
	BOSCH	CS LENS, 1/3-INCH, 3.5 TO 8mm, DIRECT DRIVE, f/1.4 TO f/360, 4 PIN.	LTC 3364/60	4,00	U	54,10	216,41	
	BOSCH	POWER SUPPLY 220/24VAC, 20VA	TC220PSX-24	4,00	U	18,85	75,39	
	BOSCH	HOUSING, OUTDOOR (NEMA 4), FOR CAMERA/LENS TO 14-INCH, 24VAC, 50/60Hz HEATER/BLOWER	HSG9483/21	4,00	U	138,24	552,94	

PRESUPUESTO

ITEM	MARCA	DESCRIPCION	MODELO	CANT	UNID	UNIT PRICES	SUB TOTAL	TOTAL
	BOSCH	MOUNT, FEED-THRU, 12-INCH, FOR LTC 9480 SERIES HOUSINGS.	LTC 9215/00	4,00	U	27,65	110,60	2.709,34
		CAMARA MOVIL EXTERIOR						
	BOSCH	ENVIRODOME KIT, 26X, OUTDOOR PENDANT, POLE MOUNT	VG4-323-ECS0M	3,00	U	1.988,38	5.965,14	
	BOSCH	CLEAR BUBLE, RUGGED VERSION		3,00	U	188,50	565,50	
	BOSCH	TRANSFORMER, OUTDOOR NEMA4X	VG4-PSU2	3,00	U	125,67	377,01	6.907,65
		SENSORES PROTECCION DE CAMARAS EXTERIORES						
	SIEMENS	Outdoor PIR detector 18m volumetric	IS390	9,00	U	361,63	3.254,63	3.254,63
		ALARMAS - EQUIPOS						
	BOSCH	Central de Intrusión, Acceso e Incendio, 75 Zonas	D7412G	1,00	U	206,24	206,24	
	BOSCH	Teclado Alfanuérico Fluror., 16 car., beige	D1255B	1,00	U	65,55	65,55	
	BOSCH	Modulo p/Red de Centrales BSS y PC9000	DX4020	1,00	U	351,91	351,91	
	BOSCH	Módulo Expansor	D8129	1,00	U	33,10	33,10	
	BOSCH	Módulo de Direccionamiento de Zona	D9127U	14,00	U	8,83	123,56	
	BOSCH	Transformador 16VAC	D1640	1,00	U	9,94	9,94	
	BOSCH	Batería 12 VDC, 7 Ah	D1260BLK	1,00	U	19,35	19,35	
	BOSCH	Gabinete Universal	D8103	1,00	U	32,64	32,64	
	BOSCH	Cerradura para Gabinete	D101	1,00	U	2,45	2,45	
		CONTACTO MAGNETICO PESADO	SM226L	7,00	U	15,69	109,85	
	FEDERAL	Strobe, 12-24VDC, pipe mount, clear	FB2PST-I-024C	3,00	U	242,43	727,28	
	FEDERAL	Mounting kit, wall mount	LWMB2	3,00	U	55,41	166,24	
	FEDERAL	Siren, electronic, multi-voltage	300GC-024	3,00	U	367,36	1.102,08	2.950,19
		ALARMAS - EQUIPOS						
	SIEMENS	Outdoor PIR detector 150m CURTAIN con calefaccion	IS404H	4,00	U	640,41	2.561,65	
	SIEMENS	Outdoor intelligent quad active IR beams 100m	IS444	1,00	U	422,46	422,46	
		Pole mounting cover for IS443/IS444/IS445 beams	BP-200F	1,00	U	20,54	20,54	
		Heater for IS443 / IS444 / IS445 beams	HTF-24	1,00	U	86,38	86,38	
		EQUIPOS - TELECOMUNICACIONES						
	MRV	MRV SWITCH OPTICO 912 1-GbE_SFSM SFP 3GbE_SFSM SFP		1,00	U	3.425,40	3.425,40	3.425,40
5		ALIMENTACION					0,00	
		CABLE THW 14 (ROLLO DE 100 M.)		10,00	U	30,00	300,00	
		CABLE UTP (X ROLLO DE 305 M)		10,00	U	110,00	1.100,00	
		CABLE COAXIAL RG-59 (305m)		15,00	U	213,00	3.195,00	
		FUENTE ASAF 24VDC - 4A		3,00	U	217,20	651,60	
		TRANSFORMADOR, 220/110 VAC 150VA		3,00	U	44,53	133,59	
		ACCESORIOS DE CONEXIÓN DE VIDEO		1,00	GBL	600,00	600,00	5.980,19
B		RECURSOS						
1		HUMANOS, HERRAMIENTAS, EQUIPOS						
		DISEÑADOR DEL SISTEMA		4,00	MES	1.200,00	4.800,00	
		LAPTOP		1,00	U	1.200,00	1.200,00	
		UTILES DE OFICINA		1,00	GBL	200,00	200,00	
		IMPRESIONES		1,00	GBL	100,00	100,00	6.300,00
SUB-TOTAL:							US\$ 174.014,77	
15% UTILIDAD:							US\$ 26.102,22	
TOTAL SIN IGV:							US\$ 200.116,98	

CCTV AutoDome® 300 Series PTZ Camera System



AutoDome® 300 Series PTZ Camera System



Bosch's AutoDome modular camera system is a revolutionary new concept in dome cameras. More than just a series of cameras, it's a dome platform built around a system of intelligent, interchangeable modules that allow you to update camera functionality quickly and cost-effectively. Using common components lets you install a basic camera system today and migrate to a more advanced version tomorrow - without having to replace the entire dome, thus protecting your initial investment.

Interchangeable modules

The entire AutoDome system is based on five interchangeable modules: the CPU, camera, housing, communications, and power supply. Simply swap one of AutoDome's interchangeable modules and quickly upgrade from analog to IP, color to day/night, or add motion detection. Never before have you had the ability to adapt a security system to your changing needs this quickly or inexpensively.

By using the same housing components, all installations have a consistent look, and observers have no idea which type of camera (if any) is watching over them. This unique, modular design also gives you the flexibility to move cameras between different housings when special coverage is needed, or as site plan requirements change. For example, an 18x PTZ camera over a specific area could easily be "hot-swapped" to a 26x or 36x day/night without removing the power.

- ↳ High-speed PTZ dome
- ↳ Fully interchangeable CPUs, cameras, housings, communications, and mounts
- ↳ Choice of 540TVL 36x day/night camera with 128x wide dynamic range or 26x and 18x day/night cameras
- ↳ Optional hybrid operation provides simultaneous analog (coax) and IP (MPEG-4) connectivity
- ↳ Advanced privacy masking
- ↳ Advanced alarm control with rules engine
- ↳ UTP transmission standard on all analog models
- ↳ Cable compensation extends cabling distances
- ↳ Multi-protocol capable

Migrating from a basic dome to one with advanced features such as AutoTrack intelligent tracking can be done quickly and easily, without requiring dome removal or rewiring. AutoDome's Ethernet communications module allows you to add IP functionality while maintaining connectivity to existing analog inputs and outputs.

300 Series highlights

The AutoDome 300 Series includes support for 18x, 26x, and the industry-leading 36x day/night PTZ cameras, and several advanced features - including an alarm management "rules" engine and privacy masking.

The AutoDome 300 Series supports a variety of standard and optional video and data transmission methods, including Bilinx (over coax and UTP), fiber, and even TCP/IP over Ethernet. Remote control, configuration, and firmware updates can also be performed over these cables, offering you unparalleled control of your cameras. Cable compensation provides extended coaxial and UTP distance runs while preventing the image quality degradation caused by signal losses from long cable lengths.

www.boschsecurity.com

2 "AutoDome" 300 Series PTZ Camera System

The optional IP Communications Module has hybrid functionality to protect your current analog technology investment while providing a clear and stable migration path to fully digital, IP-based solutions. This allows you to move to IP video at your own pace - all at once or one camera at a time. And since all AutoDome modules are completely interchangeable, there is no need to replace expensive components (e.g., cameras) or labor-intensive components (e.g., mounts and housings).

Functions

The following are some of the features that make the AutoDome 300 Series the most flexible PTZ dome camera systems in the security industry.

High-performance PTZ day/night cameras

Image control and quality are integral aspects of any PTZ dome system, and the AutoDome delivers. The 500i Series is available with a choice of 18x, 26x, or an industry-leading 36x optical zoom lens, and all 500i Series systems offer a full 12x digital zoom. The 18x and 26x cameras provide 470 TVL (NTSC/PAL), and the 36x camera provides a full 540 TVL of horizontal resolution for outstanding clarity and image detail. The 36x camera also incorporates technology that dramatically improves the dynamic range by 128 times. Also known as WDR (wide-dynamic range), it results in clear image reproduction in extreme high-contrast environments.

The patented AutoScaling (proportional zoom) and AutoPivot (automatically rotates and flips the camera) ensure optimal control.

Day/night capabilities and outstanding sensitivity make 300 Series cameras exceptional performers in all lighting conditions. In low light, these cameras automatically switch from color to monochrome by removing the IR filter to boost infrared illumination sensitivity, while maintaining superior image quality. For operation in the darkest conditions, the SensUp control feature automatically extends the shutter speed to as much as one second. This increases sensitivity by more than 50 times.

With super-quick, 360° per-second pan and tilt speeds, the AutoDome 300 Series outperforms other domes in its class. The 300 Series supports 99 pre-positions and two styles of guard tours: preset and record/playback. The preset tour can handle up to 99 pre-positions with a configurable dwell time between pre-positions; the order and frequency with which each preset is visited can be customized. The AutoDome 300 Series also provides support for two recorded tours, which have a combined duration of 15 minutes of movement. These are recorded macros of an operator's movements, including pan, tilt, and zoom activities, and can be played back continuously.

Supported menu languages include: English, French, German, Spanish, Portuguese, Italian, Dutch, and Polish.

Alarm management

The AutoDome 300 Series takes alarm handling to new levels of flexibility and power.

Inputs and outputs

The AutoDome 300 Series can handle seven alarm inputs: two of these are analog inputs that can be programmed for EOLR (End-of-Line Resistor) supervision whenever true security applications require it. These inputs enable the dome to "sense" if the contact is opened or closed and whether the wire has been tampered with (either by being cut or shorted). In addition, the AutoDome 300 Series supports four outputs: one relay rated at two amps and three additional open collectors for driving external devices. Each can be programmed individually.

Advanced alarm control

This new concept in flexibility goes beyond simple alarm handling. Advanced alarm control uses sophisticated rules-based logic to determine how to manage alarms. In its most basic form, a "rule" could define which input(s) should activate which output(s). In a more complex form, inputs and outputs can be combined with pre-defined or user-specified keyboard commands to perform advanced dome functions. There is virtually no limit to the number of combinations that you can program, making the standard software in the dome ready for any application.

Superior privacy masking

The AutoDome 300 Series allows for a total of 24 individual privacy masks, with up to eight displayed in the same scene. Unlike conventional privacy masks, these can each be programmed with three, four, or even five corners to cover more complex shapes. As the camera is zoomed each mask changes size smoothly and quickly ensuring that the covered object cannot be seen. You also have a choice of colors: black, white, and blurred. Blurred comes in handy when privacy is an issue, but determining the presence of motion is still required.

Optional hybrid analog/IP operation

Optional hybrid connectivity allows the AutoDome to simultaneously stream IP video across a local or wide area network, and CVBS video via coaxial cabling to support existing analog equipment. Network video streams are sent over IP networks and can be viewed with the Bosch DiBos Digital Video Recorder or on a PC running VIDEOS video management software. Alternatively, a Bosch IP video decoder can be used to display the video on an analog CVBS or VGA monitor. For maximum accessibility, video can be viewed using a Web browser. The BNC connection provides direct input to a conventional analog matrix switcher or DVR, further enhancing AutoDome's viewing and recording flexibility. Hybrid operation allows simultaneous dome control over the network and via biphase analog controllers.

MPEG-4 encoding

AutoDome's IP Communications Module uses the latest MPEG-4 compression technology to provide DVD-quality 4CIF video at frame rates up to 25/30 PAL/NTSC images per second (IPS). The IP module also leverages bandwidth throttling and multicasting capabilities to efficiently manage bandwidth and storage requirements while delivering the best possible image quality and resolution.

Tri-streaming video

Bosch's innovative tri-streaming feature enables AutoDomes equipped with the optional IP communications module to generate two independent MPEG-4 streams and a JPEG stream simultaneously. This feature allows you to stream high-quality images for live viewing while recording at a reduced frame rate, and at the same time, stream JPEG images to a remote PDA device.

Unsurpassed reliability

AutoDome builds on Bosch's 10-plus years of experience designing and manufacturing dome camera systems. All AutoDome pendant housings (indoor and outdoor) are rated to provide IP 66 protection. Outdoor EnviroDome housings provide an operating temperature range down to -40°C (-40°F). The optional "XT" extreme temperature kit allows AutoDome to operate in temperatures down to -60°C (-76°F), ensuring reliable operation in even the harshest environments.

All housings come standard with a rugged polycarbonate bubble, recessed set screws, and a recessed bubble latch to reduce the chance of damage from vandalism. Inside the dome, the power, data, and video are all protected against unexpected surges of power.

Ease of installation and servicing

Bosch's innovative software, the Configuration Tool for Imaging Devices (CTFID), allows operators or technicians to control the PTZ, change camera settings, and even update firmware from virtually anywhere without need for additional wiring. For the new Ethernet versions, an embedded Web server lets the installer access all the user settings, make camera adjustments, and update firmware via a standard Web browser.

AutoDome's innovative design simplifies installation and servicing. AutoDome reduces maintenance costs because you can replace individual modules instead of entire camera assemblies. Simply pop out the old module and slide in the new: it's almost as easy as changing a light bulb. All tethers have been replaced with hinges, making installation and servicing safer and easier. You can even access the built-in power supply without taking down the dome. The AutoDome 300 Series has advanced built-in diagnostics to simplify service and minimize downtime. Using the On Screen Display (OSD), a technician can quickly and easily check critical parameters (such as internal temperature and input voltage level) to verify that the dome is functioning within acceptable operating limits. If video is not present, a local inspection of three diagnostic LEDs at the camera site can identify the presence of video and control data.

Feature Comparison Matrix

The following table provides an overview of the AutoDome camera family and its available features:

SLIndMid Fe. return	AutoDome 100 Series	MidDome 200 Series	AutoDome 300 Series	AutoDome 500 Series
Interchangeable Modules	•	•	•	•
High Speed PTZ				
PreSet Shots		64	99	99
Guard Tour				
AI/MI Inputs/Outputs			7/4	7/4
Hi-Res. Resolution				
Day/Night Operation	•	•	•	•
IR Sensitive	•	•	•	•
Sensor Extended Sensitivity	•	•	•	•
UTP/Coax Transmission	•	•	•	•
Hybrid Analog/IP Connectivity	•	•	•	•
Cable Compensation			•	•
Hot-Swap Camera Modules	•	•	•	•
Ruggedized, Vandal-Resistant Enclosure	•	•	•	•
Advanced Features				
AutoTrack II Motion Tracking				•
Video Motion Detection				•
Image Stabilization				•
Privacy Masking and Sector Blanking			•	•
Advanced Alarm Control			•	•

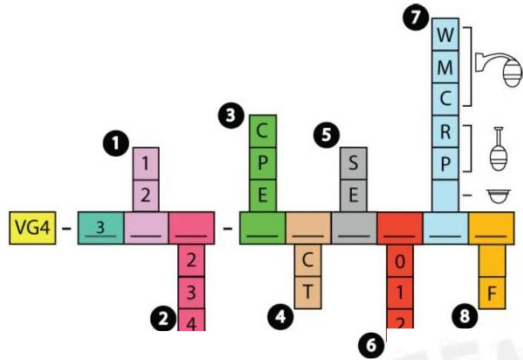
*Compatible over Coax and UTP transmission only. Remote configuration over IP via web interface.

Certifications and Approvals

Electromagnetic Compatibility (EMC)	Complies with FCC Part 15, ICES-003, and CE regulations, including EN 50130-4
Product Safety	Complies with CE regulations, UL, CSA, EN, and IEC Standards

4 1AutoDome® 300 Series PTZ Camera System

Installation/Configuration Notes



- 1 Video Format**
 - PTZPAL 0 24 VAC¹
 - PTZNTSC 120 VAC
- 2 Camera Type**
 - 2 18x Day/Night PTZ
 - 3 26x Day/Night PTZ
 - 4 36x Day/Night PTZ
- 3 Enclosure**
 - C In-ceiling²
 - p Indoor Pendant
 - E Outdoor Pendant
- 4 Bubble**
 - C Clear Rugged
 - T Tinted Rugged
- 5 Communications**
 - S Standard (Coax/UTP)
 - E Ethernet (TCP/IP)
- 6 Power**
 - 0 24 VAC¹
 - 120 VAC
 - 230VAC
- 7 Mount**
 - W Wall
 - M Mast
 - C Corner
 - R Roof⁴
 - p Pipe
- 8 Fiber Optics**
 - No Fiber
 - Fiber³

1 No transformer included. Customer must supply an approved 24 VAC limited power supply (VG4-A-PSUx or equivalent). Not available with fiber optic option.
 2 Recessed in-ceiling housing units do not require kit options for reference numbers 6, 7, or 9.
 3 Fiber optic option is multi-mode with biphasic. Requires LTC 4629 at the system.
 4 Roof mount mounts to vertical Parapet. For flat roof installation, order an additional LTC 9230/01 Flat Roof Adapter Plate.

Technical Specifications

Camera 36x Day/Night

Imager	1/4 in. Exview HAD CCD (752 x 582 PAL)/(768 x 494 NTSC)	
Lens	36xZoom (3.4 -122.4 mm) F1.6 to F4.5	
Focus	Automatic with manual override	
Iris	Automatic with manual override	
Field ofView	1.7° to 57.8°	
Video Output	1.0 Vpp, 75 Ohm	
Gain Control	Off/Auto (with adjustable limit)	
Synchronization	Line-Lock (-120° to 120° vertical phase adjust) or internal crystal	
Aperture Correction	Horizontal and vertical	
Digital Zoom	12x	
Horizontal Resolution	540 TVL (NTSC, PAL) typical	
Sensitivity (typical) 5	30 IRE	50IRE
DayMode		
SensUp Off	0.66 k	1.4 k
SensUp On	0.033 k	0.083 k
NightMode		
SensUp Off	0.1661x	0.331x
SensUp On	0.0065 k	0.0164 k
SNR	>50dB	
White Balance	2000 K to 10,000 K	

5 F1.6, 1/60 (1/50) shutter, max AGC.

AutoDome® 300 Series PTZ Camera System 15

Camera 26x Day/Night

Imager	1/4 in. Exview HAO e.c.o (752 x 582 PAL)/(768 x 494 NTSC)	
Lens	26x Zoom (3.5-91.0 mm) F1.6 to F3.8	
Focus	Automatic, with manual override	
Iris	Automatic, with manual override	
Field of View	2.3° to 55°	
Video Output	1.0 Vp-p, 75 Ohm	
Gain Control	Off/Auto (with adjustable limit)	
Synchronization	Line-Lock (-120° to 120° vertical phase adjust) or internal crystal	
Aperture Correction	Horizontal and vertical	
Digital Zoom	12x	
Horizontal Resolution	470 TVL (NTSC, PAL) typical	
Sensitivity (typical) ⁶	30 IRE	50 IRE
DayMode		
SensUpOff	0.5 lx	1.0 lx
SensUpOn	0.0052 lx	0.013 lx
NightMode		
SensUpOff	0.10 lx	0.26 lx
SensUpOn	0.0013 lx	0.0026 lx
SNR	>50dB	
White Balance	2000 K to 10,000 K	

6 F1.6, 1/60 (1/50) shutter, max AGC.

Camera 18x Day/Night

Imager	1/4 in. Exview HAO e.c.o (752 x 582 PAL)/(768 x 494 NTSC)	
Lens	18x Zoom (4.1-73.8 mm) F1.4 to F3.0	
Focus	Automatic with manual override	
Iris	Automatic with manual override	
Field of View	2.7° to 48°	
Video Output	1.0 Vp-p, 75 Ohm	
Gain Control	Off/Auto (with adjustable limit)	
Synchronization	Line-Lock (-120° to 120° vertical phase adjust) or internal crystal	
Aperture Correction	Horizontal and vertical	
Digital Zoom	12x	
Horizontal Resolution	470 TVL (NTSC, PAL) typical	
Sensitivity (typical) ⁷	30 IRE	50 IRE
DayMode		
SensUpOff	0.41x	0.7 lx
SensUpOn	0.0041 lx	0.0082 lx
NightMode		
SensUpOff	0.05 lx	0.17 lx
SensUpOn	0.0007 lx	0.0013 lx
SNR	>50dB	
White Balance	2000 K to 10,000 K	

7 F1.4, 1/60 (1/50) shutter, max AGC.

Mechanical/Electrical

Model	In-Ceiling	Indoor Pendant	EnviroDome9
Weight	2.66 kg (5.861b)	2.88 kg (6.31b)	3.32 kg (7.31b)
Pan Range	360° cont.	360° cont.	360° cont.
TiltAngle	1° above horizon	18° above horizon	18° above horizon
Variable Speed	0.1°/s-120°/s	0.1°/s-120°/s	0.1°/s-120°/s
Pre-position	Pan: 360°/s	Pan: 360°/s	Pan: 360°/s
Speed	Tilt: 110°/s	Tilt: 210°/s	Tilt: 210°/s
Preset Accuracy	± 0.1° typ.	± 0.1° typ.	± 0.1° typ.
Power	21-30VAC 50/60 Hz	21-30VAC 50/60 Hz	21-30VAC 50/60 Hz

Power Draw. (typ)

	In-Ceiling	Indoor Pendant	EnviroDome9
Analog Models	10W	10W	46w ⁸
Ethernet Models	14W	14W	50w ⁸

8 Add 16 W if using VG4-SHTR-XT kit.

Surge Suppression

Protection on Video	Peak current! 10 kA (Gas Tube Arrester). peak power 1000 W(10/1000 μ)
Protection on RS-232/485.	Peak current! 10 A. peak power 300 W(8/20 μ)
Biphase	
Protection on Alarm Inputs	Peak current 17 A, peak power 300 W(8/20 μ)
Protection on Alarm Outputs	Peak current! 2 A, peak power 300 W(8/20 μ)
Protection on Relay Outputs	Peak current! 7.3 A, peak power 600 W (10/1000 μ)
Protection on Power Input (Dome)	Peak current! 7.3 A, peak power 600 W (10/1000 μ)
Protection on Power Output (Arm Power Supply)	Peak current! 21.4 A, peak power 1500 W (10/1000 μ)

Environmental

Model	In-Ceiling	Indoor Pendant	EnviroDome9
Operating Temp.	-10°C to 50°C (14°F to 122°F)	-10°C to 50°C (14°F to 122°F)	-40°C to 50°C (-40°F to 122°F)
Storage Temp.	-40°C to 60°C (-40°F to 140°F)	-40°C to 60°C (-40°F to 140°F)	-40°C to 60°C (-40°F to 140°F)
Humidity	0%to90% relative, non- condensing	0%to90% relative, non- condensing	0%to 100% relative, condensing

6 1AutoDome® 300 Senes PTZ Camera System

Miscellaneous

Sectors/Titling	16 independent sectors with 16-character tilles/ sector
Camera Setup/ Control	Biphase, RS-232, RS-485, Bilinx® (coax)
Communications Protocols	Biphase, Bilinx®, Peleo P. and Peleo D
Pre-positions	99, each with 16-character tilles
Guard Tours	Two (2) types of tours, <ul style="list-style-type: none"> • Recorded tours- two (2). total duration 15 minutes • Presettour- one (1). consisting of up to 99 scenes, consecutively and (1) customized up to 99 scenes
Supported Languages	English, French, German, Spanish, Portuguese, Polish, Italian, and Dutch

9 Bilinx not available on Ethernet models.

Cable Compensation

Max Distance	With Pre-comp OFF	With Pre-comp ON
RG-59/U	1000 ft (300 m)	2000 ft (600 m)
RG-6/U	1500 ft (450 m)	3000 ft (900 m)
RG-11/U	2000 ft (600 m)	4000 ft (1200 m)
Cat5/UTP (Passive receiver)	750 ft (225 m)	1500 ft (450 m)

User Connections

Power (Camera)	21-30 VAC, 50/60 Hz
Power (Heater)	21-30 VAC, 50/60 Hz
Biphase ±	Control Data
Audio Line 1 ¹⁰	9 K Ohm typ, 5.5 Vp-p max
RS-232 RX/TX or RS-485 ±	optional control data (dip switch selectable)
Video	BNC/UTP ¹¹
EOLR Alarm Inputs (2)	Programmable for "normally open", "normally closed", "normally open-supervised", "normally closed-supervised"
Alarm Inputs (5)	Programmable for "normally open" or "normally closed"
Relay Out (1)	Dry contact output rating, 2A@30VAC
Open Collector Outputs (3)	32VDC@150 ma max

¹⁰ With Ethernet models, the biphase ± can optionally be used as the audio line in connector.

¹¹ Ethernet models have no UTP analog output only BNC (coax).

Mounts/Accessories

Pendant Mounts

ArmMounts	
Wall Arm (No Transformer)	VG4-A-PA0
Wall Arm (120/230 VAC Transformer)	VG4-A-PA1 / VG4-A-PA2
Wall Arm (120/230 VAC Transformer, and FiberOptics)	VG4-A-PA1F / VG4-A-PA2F

Optional Mounting Plates for Arm Mounts

Corner Mounting Plate	LTC 9542/01
Mast (Pole) Mounting Plate	LTC 9541/01

Pipe Mounts

Pipe Mount Cap	VG4-A-9543
----------------	------------

Roof Mounts

Roof (Parapet) Mount	VG4-A-9230
----------------------	------------

Optional Mounting Plates for Roof Mounts

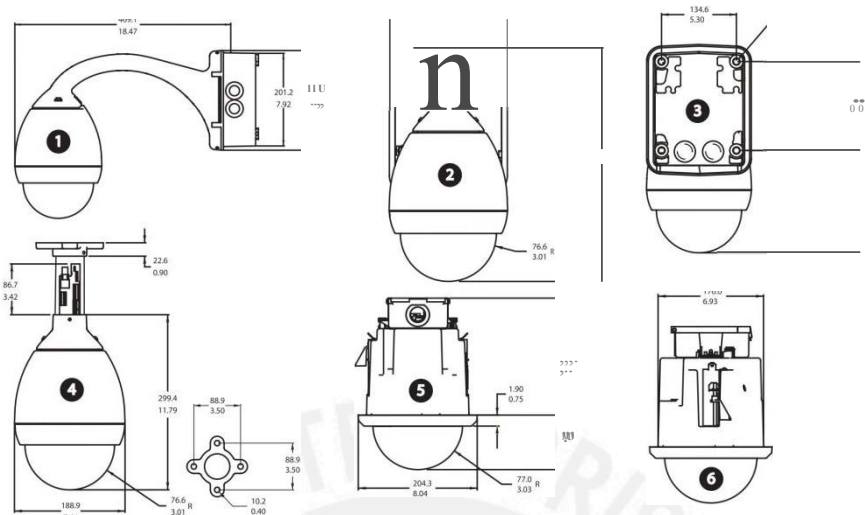
Flat Roof Adapter for Parapet Mount	LTC 9230/01
-------------------------------------	-------------

Power Supplies

Outdoor Power Supply Box (120/230 VAC Transformer)	VG4 A-PSUI / VG4-A PSU2
Outdoor Power Supply Box (120/230 VAC Transformer, and Fiber Optics)	VG4-APSU1F / VG4A-PSU2F
Extended temp heater module extends temperature range to -60°C (-76°F) for EnviroDome [®] only	VG4-SHTR-XT

Fiber Optic Models

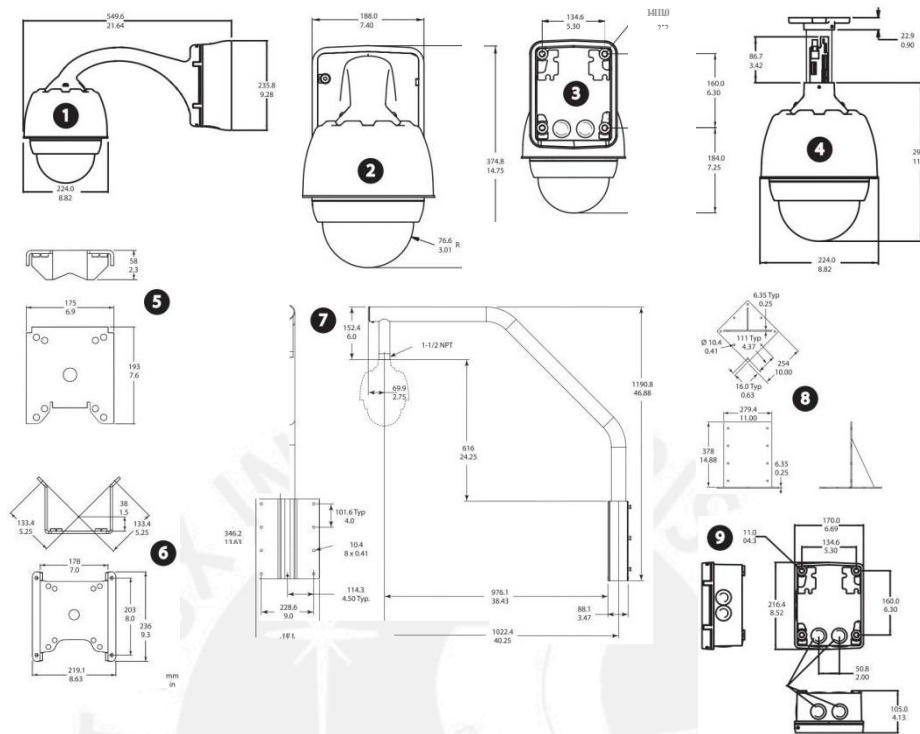
Optical Fiber Compatibility	50/125 mm, 62.5/125 mm, lowloss multimode glass fiber, rated for a minimum system bandwidth of 20 MHz (video 850 nm/Control 1300 nm)
Max Distance	4km (2.5 miles)



Indoor System Dimensions

Reference	Description	Reference	Description
4	Wall Mount-Side with power supply and trim skirt removed	4	Pipe Mount
3	Wall Mount-Front with power supply and trim skirt	5	In-ceiling Mount - Front
6	Wall Mount-Back with power supply and trim skirt	6	In-ceiling Mount - Side

8 1AutoDome® 300 Senes PTZ ca



Outdoor System *Dimensions*

Reference	Description	Reference	Description
1	Wall Mount - Side with power supply and trim skirt	6	Corner Mount
2	Wall Mount - Front with power supply and trim skirt	7	Roof Mount
3	Wall Mount - Back with power supply and trim skirt	8	Roof Mount Adapter,
4	Pipe Mount	9	Power Supply for Pipe and Roof Mounts
5	Mast Mount		

g 1AutoDome® 300 Series PTZ Camera System



Europe, Middle East, Africa:
Bosch Security Systems BV.
P.O. Box 80002
5600 JB Eindhoven, The
Netherlands
Phone: +31 40 2577 284
☎ **40 2577 330**
emea.securitysystems@bosch.com
<http://www.boschsecurity.com>

Americas:
Bosch Security Systems, Inc.
130 Peninton Parkway
Fairport, New York, 14450, USA
Phone: +1 800 289 0096
Fax: +1 585 223 9180
:e1uriy:c1c:llur,kj,11u111
<http://www.boschsecurity.us>

Asia-Pacific:
Bosch Security Systems Pte Ltd
38C Jalan Penimplan
Singapore 577180
Phone: +65 6319 3450
Fax: +65 6319 3499
cip:ea1byy,hmi@bui11u111
<http://www.boschsecurity.com>

Represented by

© Bosch Security Systems &V. 2007 | Data subject to change without notice F3902578443 1Cur: en-US, V4, 7 May 2007

CCTV ILTC 0495 Series DinionXF Day Night Cameras

BOSCH

Invented for life

LTC 0495 Series DinionXF Day Night Cameras



- 15-bit DSP Technology
- High sensitivity
- Mechanically switching IR filter for IR sensitivity at night
- XF-Dynamic for unsurpassed wide dynamic range
- Bilinx Communication for remote set-up and control
- Default Shutter eliminates motion blurring
- Four area video motion detection
- 540 TVL resolution

The LTC 0495 High Performance 1/3-inch Digital CCD Day/Night Camera ensures the highest image quality possible at any time. Depending on the available light the camera will automatically switch from color to monochrome.

A unique combination of 15-bit digital video processing that enhances sensitivity and XF-Dynamic which extends the dynamic range provides a sharper, more detailed image with outstanding accuracy in color reproduction. All Dinion cameras are supplied ready to operate. Simply attach and focus the lens, then connect power. No tools are required for back focus and power connection. For especially challenging situations where fine tuning or special settings are required, the camera parameters can be individually set using the control buttons on the side of the camera and On-screen Display (OSD). The camera automatically detects the lens type. The Lens Wizard ensures accurate back-focusing for perfectly sharp pictures at all times.

Functions

XF-Dynamic

The highly accurate 15-bit digital signal is automatically processed to optimally capture the detail in both the high and low light areas of the scene simultaneously, maximizing the information visible in the picture.

Bilinx Technology

Bilinx is a bidirectional communication capability embedded in the video signal of all Bosch Dinion cameras. **Technicians can check status, change camera settings and even update firmware from virtually anywhere along the video cable.** Bilinx reduces service and installation time, provides for more accurate set-up and adjustment, and improves overall performance. In addition, Bilinx uses the standard video cable to transmit alarm and status messages, providing superior performance without additional installation steps.

Video Motion Detection

The built-in video motion detector allows you to select up to four fully programmable areas with individual thresholds. The global scene change detector minimizes false alarms caused by sudden lighting condition changes, such as switching on or off the indoor or security lighting. When motion is detected alarms may be displayed in the video signal while the output relay can be closed in addition to **alarm message transmission on Bilinx.**

Auto Black

The automatic black level feature enhances contrast by compensating for reduced contrast! (i.e. glare, fog, mist).

www.boschsecurity.com

2 1LTC 0495 Senes D1n1onXF Day Night Cameras

Default Shutter

The LTC 0495 features a fast, default shutter speed in sufficient lighting conditions to capture moving objects. When light levels fall and other adjustments have been exhausted, the shutter speed reverts to the standard setting to maintain sensitivity.

Back Light Compensation (BLC)

Offering a fully programmable BLC area of interest, and a variable BLC level, the camera can be easily set up for even the most challenging entrance applications.

Lens Wizard

The Lens Wizard automatically detects the lens type and helps focus the lens at the maximum opening to ensure proper focus is maintained throughout the 24-hour cycle. No special tools or filters are required.

Programmable Modes

Three independent, preprogrammed operating modes support typical applications, but are fully programmable for individual situations. Switching between modes is easy via Bilinx or the external alarm input.

Day/Night Mode

The Day/Night Mode LTC 0495 provides enhanced night viewing by increasing the IR sensitivity. The IR filter can switch from color to monochrome automatically by either sensing the illumination level or via the alarm input. The filter can be switched manually via the alarm input, through the camera menu or via the Bilinx coaxial control interface. An internal through the lens IR detector enhances the monochrome mode stability, as it prevents reverting to the color mode when IR illumination is dominant.

SensUp

By increasing the integration time on the CCD up to 10 times, the effective sensitivity is dramatically enhanced. This is especially useful when relying only on moonlight for illumination.

Certifications and Approvals

Electro Magnetic Compatibility

Emission EN55022 class 8, FCC class 8 part 15

Immunity EN50130-4 Alarm Systems, Part 4

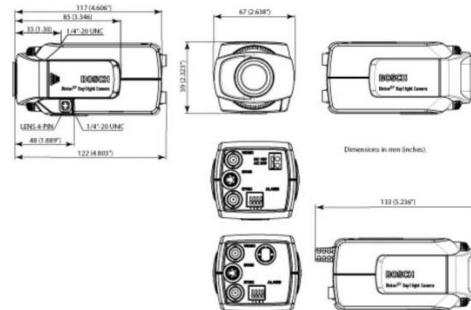
Vibration Camera with 500 gr (1.1 lbs) lens according to IEC60068-2-27

Safety

LTC 0495/11 and LTC 0495/51: EN60065

LTC 0495/21 and LTC 0495/61: UL6500, cUL CAN/CSA E60065-00

Installation/Configuration Notes



Dimensions in mm (inches)

Parts Included

Quantity	Component
1	LTC 0495 Series D1n1on™ Day/Night Camera
1	C/CS - mount conversion ring
1	Spare male 4 - pin lens connector
0	Lens not included

Technical Specifications

Electrical

ModelNo.	Rated Voltage	
LTC0495/11	12 · 28 VAC 11-39VOC	45 -65 Hz
LTC 0495/21	12 · 28 VAC 11 · 39 voc	45 -65 Hz
LTC 0495/51	110 · 240VAC	45 · 65 Hz
LTC 0495/61	110 · 240VAC	45 · 65 Hz
Power Consumption	4W	
ce o Type	1/3-inch interline	
Active Pixels		
PAL Model,	752 X582	
NTSC Model	768 X492	
Sensitivity (3200 k)		
Sensitivity (Full video)"	2.4 lux (0.24 fe)	
Sens itivity 50 IRE"	0.59 lux/ 0.08 lux (Monochrome mode)	
Minimum illumination ¹	0.24 lux/ 0.038 lux (Monochrome mode)	
Minimum Illumination with Sens Up	0.024 lux/ 0.0038 lux (Monochrome mode)	
Horizontal Resolution	540 TVL	
Signal-to-Noise Ratio	>50dB	
Video Output	1 Vpp, 75 ohm	
Y/COoutput	Y, 1 Vpp / C, 0.3 Vpp	
Synchronization	Internal, Line Lock, HV-lock and Genlock (Burst lock) selectable	
Shutter	Auto (1/60 (1/50) to 1/500000). fixed, flickerless. default	
Sensitivity up	Off. Automatic continuous up to 10x	
Auto Black	On. Off selectable	
Range	32x dynamic range enhancement	
Dynamic Noise Reduction	Auto, Off selectable	
Contour	Sharpness enhancement level selectable	
BLC	Off, Area and Level selectable	
Gain	Auto (maximum level selectable to 28 dB) or fixed level selectable	
Lens Mount	CS (max lens protrusion 5 mm, 0.2 inch)	
White Balance	ATW (2500 · 10000 K). AWBhold, Manual WB selectable	
WMD	4 area, sensitivity selectable	
Alarm Output	VMOor Bilinx	
Alarm Input (TIL)	Profile switching, •5 V nominal, •40 VOC max	
Alarm Output Relay	max. 30 VACor •40 VOC. Max 0.5 A continuous,IOVA	

ModelNo.	Rated Voltage
External Synchronal Input	75 ohm or High Impedance selectable
Cable	Up to 1000 m (3000 ft) coax without external amplifiers (automatic set-up in combination with coaxial communication)
Compensation	
CameraIO	16 character editable string, position selectable
Lens Types	Manual. OC and Video-Iris auto-detect with override OC-iris drive: max. 50 mAcontinuous Video-iris, 11.5 ± 0.5 VDC. max 50 mA continuous
Remote Control	Bilinx coaxial communication
	ti #1.2. 89% reflect10n, SenseUp orr

Mechanical

Dimensions (HxWxL)	59x67x122mm (2.28 x 2.6 x 4.8 inch) withoutlens
Weight	450 g (0.99 lbs) without lens
Tripod Mount	Bottom (isolated) and top 1/4-inch 20 UNC
Controls	OSO with softkey operation

Environmental

Operating Temperature	-20°C to •50°C (-4°F to 122°F)
Storage Temperature	-25°C to•70°C (-13°F to •158°F)
Operating Humidity	20% to 93% RH
Storage Humidity	upto 98%RH

Ordering Information

LTC 0495/11 OinionXF Oay Night Camera 1/3-inch. high performance. 540 TVL. PAL. DSP, 12 - 28 VAC/11 - 39 VDC, 50 Hz	LTC0495/11
LTC 0495/21 DInionXF Day Night Camera 1/3-inch, high performance, 540 TVL, NTSC, OSP, 12 - 28 VAC/11 - 39 VOC. 60Hz	LTC0495/21
LTC 0495/51 OinionXF Oay Night Camera 1/3-inch, high performance. 540 TVL. PAL, OSP, 110 - 240 VAC, 50 Hz	LTC0495/51
LTC 0495/61 OinionXF Oay Night Camera 1/3-inch, high performance, 540 TVL, NTSC, OSP, 12 - 28 VAC. 60 Hz	LTC0495/61

Accessories

LTC 3364/21 Varifocal Lens IR corrected 1/3-inch, 2.8 - 6 mm. OC-iris. CS-mount. F1.4-200. 4-pin	LTC3364/21
LTC 3764/20 Varifocal Lens IR corrected 1/2-inch, 4 -12 mm, OC-iris. C-mount, F1.2-360, 4-pin	LTC3764/20
LTC 3774/30 Varifocal Lens IR corrected 1/2-inch, 10 -40 mm, OC-iris, C-mount, F1.4-360, 4-pin	LTC3774/30

www.boschsecurity.com

4 | LTC 0495 Series D1n1onXF Day Night Cameras

Ordering Information

LTC 3783/50 Zoom Lens R corrected 1/2-inch, 8.5 - 85 mm, Video-iris, C-mount Fl.6-360, 4-pin	LTC3783/50
LTC 3793/50 Zoom Lens R corrected 1/2-inch, 8 - 144 mm, Video-iris, C-mount, Fl.6-360, 4-pin	LTC3793/50
LTC 3664/40 Varifocal Lens R corrected 1/3-inch, 2.8 - 11 mm, OC-iris, CS-mount Fl.4-360, 4-pin	LTC3664/40
LTC 3664/30 Varifocal Lens R corrected 1/3-inch, 3.0 - 8 mm, OC-ir. CS-mount Fl.0-360, 4-pin	LTC3664/30
TC 120PS Power Supply Unit 110-120VAC/15 VOC, 50/60 Hz, 300mA	TC120PS
TC 220PS Power Supply Unit 230 VAC/12 VOC, 50 Hz, 10 VA	TC220PS
TC 220PSX-24 Power Supply Unit 230 VAC/20 VAC, 50 Hz, 20VA	TC220PSX-24
TC 1334 Power Supply Unit 120 VAC/24 VAC, 60 Hz, 30VA	TC1334
Software Options	
VP-CFGSFT Configuration Software for cameras using Bilinx, includes VP-USB Adapto,	VP-CFGSFT

Eur. MKIdleEut, Africa,
Do, chSe=11rnySy ems8\J.
P.O. Box 80002
5600 10 Blvd. m = N thrland
Phone: +31 40 2577 264
fax: +31 40 2577 380
emes.11rny.s11tem@bodueom
www.bokhsec1111y.com

AmeIcas:
BoKh Security Systems, Inc.
130 Pennington Pkway
Rariparr, NewYork, tct41-0USA
Phone: +1 800 269 0096
fax: +1 585 223 9180
:eourty.1c.us.bokh.com
-wbol10sec11rny.11s

*51a-P.cific:
QoMhSecurityS, .tc#111 Eit Ltd
16C Jallm mungn
S1P/Papone577180
Phone: +666319 3450
fu:+6563193-199
apr.1e[.untypslcm5(1bokh.com
w-.bokhsecurity.com

Repre1entedby

C. Bokh Security Systems 0061 Data .wbj(11 change wdho1 nota:
E1743714003 | Cur: en+US, V1, 14 Sep 2000

CCTV | VIP X1600 Modular High-Performance Video Encoder



VIP X1600 Modular High-Performance Video Encoder



- Up to 16 video inputs
- Modular and expandable with hot-swappable video modules
- Direct or network-attached RAIDS storage via iSCSI
- Up to 30 ips at 4CIF/D1
- Storage-efficient Dual Streaming
- Intelligent Video Motion Detection and camera tampering detection
- Redundant power supply inputs
- Redundant Gigabit Ethernet ports

The Bosch VIP X1600 is a high-performance modular multi-channel CCTV video encoder. The VIP X1600 is accommodating up to four hot-swappable video modules, each with four analog video inputs. Video-audio modules are also available.

Having a modular construction, expanding a system is simple and low cost. Simply plug in additional video or video-audio modules at any time, without interrupting the operation of existing channels.

The VIP X1600 delivers MPEG-4 video over IP at a rate of 25 images (PAL) or 30 images (NTSC) per second at 2CIF or 2/3 D1 resolution, but is also capable of providing 4CIF/Full D1 resolution at 12.5/15 images per second for every video channel. For those inputs, where ultimate performance is required, full 4CIF 25/30 images per second video is available when alternate channels on an input module are used.

Functions

Viewing

The video can be viewed on a PC using VIDOS, the Bosch comprehensive video management system, or in a simple Web browser such as Internet Explorer. It can also be integrated into other video management systems using the Bosch Video SDK.

By routing the IP video to a high performance VIP XD video decoder or a VIDOS Monitor Wall you can present the video with ultimate clarity on an analog CCTV or large, flat-screen VGA monitor or TV.

Recording

The VIP X1600 offers unparalleled recording options - locally, short-term RAM-based, network-attached utilizing iSCSI devices, and of course centrally using Network Video Recorders. The iSCSI RAID5 storage enables the VIP X1600 to act as a conventional DVR as well as to stream high performance live video across the network.

Reliability

Designed for reliability, the VIP X1600 features hot-swappable video modules, dual redundant power supply inputs, dual redundant network ports and fault-tolerant mass storage via iSCSI RAID5.

Dual Streaming

The VIP X1600 uses Dual Streaming to generate two independent IP video streams per channel. This allows viewing and recording at two different quality levels to save disk space and bandwidth. On alarm, it may send out email with JPEG images attached.

www.boschsecurity.com

2 1VIP X1600 Modular High-Performance Video Encoder

Increased intelligence

The VIP X1600 supports increased intelligence at the edge that includes detection of:

- video loss
- masking
- hooding
- defocusing
- diverted camera

These detection features provide tamper detection for various unified picture causes. More advanced video content analysis (VCA) applications are offered with Bosch's Intelligent Video Motion Detection (IVMD) as additional licensable option, giving VCA directly at the video input.

These powerful and flexible multi-channel devices with iSCSI recording represent the cutting edge of high performance Video over IP for CCTV today.

Certifications and Approvals

- Complies with
- CE: IEC 60950
 - UL 1950
 - AS/NZS3548
 - EN 55103-1 :2
 - EN 50130-4
 - EN 55022
 - EN 55024
 - EN 61000-3-2; EN 61000-3-3
 - FCC47CFRCh.1Part 15



Front view



Rear view with 4x video-audio modules



Modules

1. 2x redundant 10/100/1000 Base-T Gigabit Ethernet
2. 5 status LEDs
3. 4 modules, each with 4x video-audio in
4. Redundant power supply inputs
5. 4x alarm in per module
6. 4x relay out per module
7. COM port (RS232/485) per module
8. Line-level stereo audio jack per 2 channels (video-audio module only)

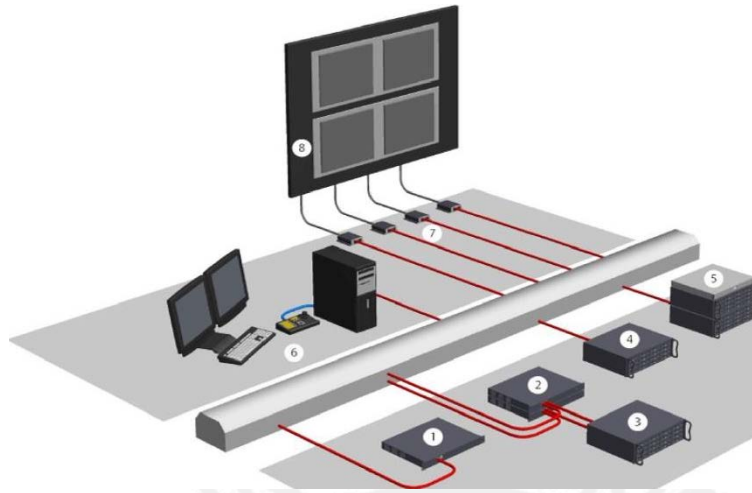
Installation/Configuration Notes

Frame Rate Combinations

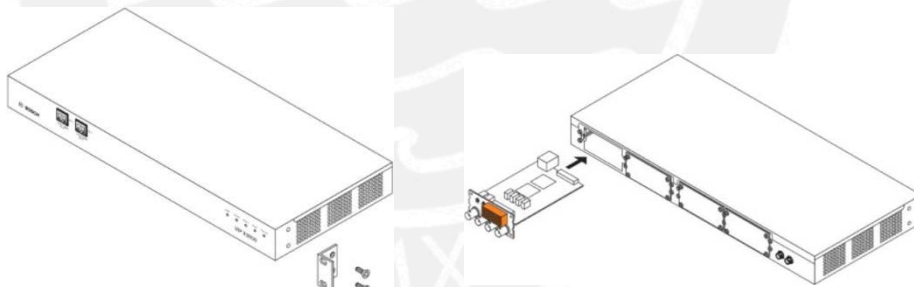
	4 CH per Module	2 CH per Module
Camera inputs	4	2
4CIF/D1 frame rate	15 ips •	30 ips•
2/3 DL frame rate	30 ips •	30 ips•
2CIF frame rate	30 ips •	30 ips •
Dual Streaming	Yes	Yes

**depending on picture content and movement*

VIP X1600 Modular High-Performance Video Encoder 13



- 1 · 16 analog Cameras. Network-attached iSCSI storage or Local RAM Recording or Streaming only
- 2 · 2x 16 analog Cameras
- 3 · Direct-attached iSCSI RAID5
- 4 · Network-attached iSCSI RA/05
- 5 · NVR Server with SCSI connection to very large RA/05 Disk Arrays > 12 TByte
- 6 · Management Station with IntuiKey
- 7 · Decoders
- 8 · Monitors



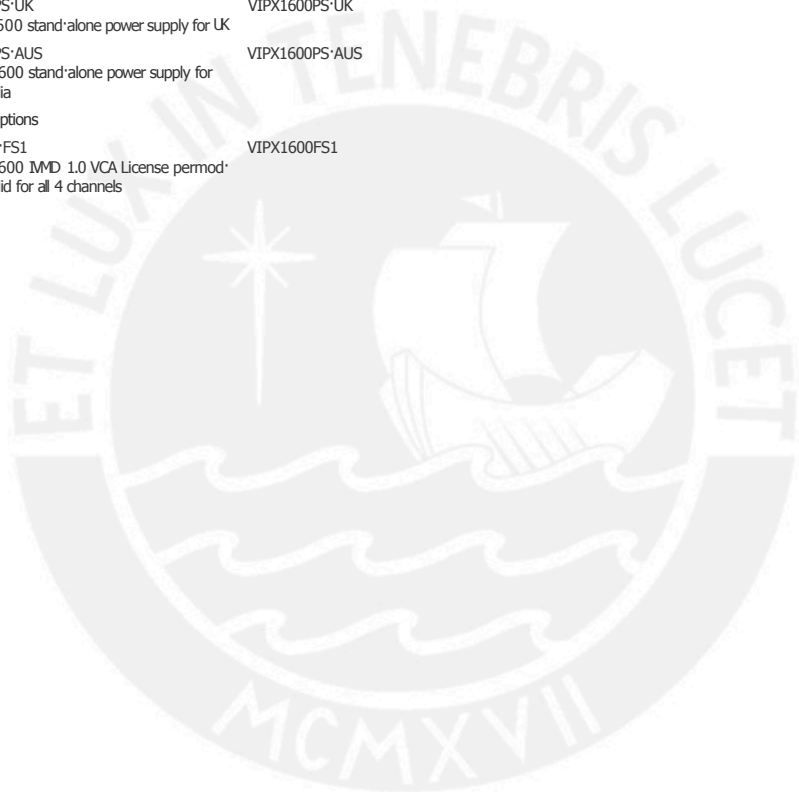
VIP X1600 rack mounting accessories

VIP X1600 module assembly

www.boschsecurity.com

Ordering Information

VIP X1600 Base VIP X1600 Base System with 4 module slots FastEthernet backplane, dual power inputs	VIPX1600
VIPX1600M4S VIP X1600 4-channel video module, serial I/O 4 alarm in, 4 relays	VIPX1600M4S
VIPX1600M4SA VIP X1600 4-channel video-audio module, serial I/O 4 alarm in, 4 relays, 4 audio in	VIPX1600M4SA
Accessories	
VIPX1600PS VIP X1600 stand-alone power supply for EU and USA	VIPX1600PS
VIPX1600PS-UK VIP X1600 stand-alone power supply for UK	VIPX1600PS-UK
VIPX1600PS-AUS VIP X1600 stand-alone power supply for Australia	VIPX1600PS-AUS
Software Options	
VIP X1600-FS1 VIP X1600 IMD 1.0 VCA License per module, valid for all 4 channels	VIPX1600FS1



Europe, Middle East, Africa
Bosch Security Systems e.v.
P.O. Box 80002
S600JB Eindhoven, The Netherlands
Phone: +31 40 2517 284
Fax: +31 40 2577 330
emci_securitysystem@bosch.com
www.boschsecurity.com

America
Bosch Security Systems, Inc.
130 Pennton Parkway
Fairport, New York, 14450, USA
Phone: 11 800 289 0096
FAX: +1 585 2239100
securitysales@us.bosch.com
www.boschsecurity.us

Asia Pacific
Bosch Security Systems Pte Ltd
38C Jalan Pemimpin
Singapore 577160
Phone: +65 6319 2450
fax: +65 6319 3499
aprc_securitysystem@bosch.com
www.boschsecurity.com

Represented by

© Bosch Security Systems 0061 Data subject to change without notice
E.29691331951 Cur, en-US, V4, 15 Sep 2006

4 1VIP X1600 Modular High-Performance Video Encoder

Parts Included

VIP X1600 Base

Quantity	Component
1	VIP X1600 Base System Quick Installation Guide CD ROM with software and documentation Mounting material Modules and power supply not included, must be ordered separately

VIP X1600 Module

Quantity	Component
1	VIP X1600 Module Quick Installation Guide Mounting material

VIP X1600 stand-alone Power Supply

Quantity	Component
1	Power supply for VIP X1600, includes cables, country versions EU/US, UK and ALS available

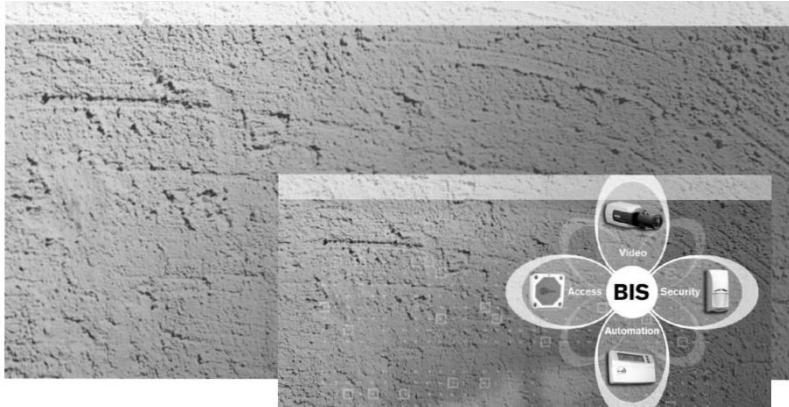
Technical Specifications

Electrical

Video Compression Standards	MPEG-4; JPEG
Video Data Rate	9.6 kbps - 6 Mbps per channel
Video Resolution	704x 576/480 (4CIF/D1: 12.5/15 ips) 704 x 288/240 (2CIF: 25/30 ips) 464x 576/480 (2/3 D1: 25/30 ips) 352 x 576/480 (1/2 D1: 25/30 ips) 352 x 288/240 (CIF: 25/30 ips) 176 x 144/120 (QCIF: 25/30 ips)
GOP Structure	I,IP
Overall Delay	120 ms
Network Protocols	RIP, Telnet, UDP, TCP, IP, HTTP, IGMPV2, IGMPV3, ICMP, ARP, SNMP V1/V2c/V3 MIB-II)
RAM Recording	32MB total, 8MB per channel
Software Update	Flash ROM, remote programmable
Configuration	Configuration Manager or web browser
Ethernet	Dual port 10/100/1000 Base-T, auto-sensing, half/full duplex, RJ45
Module Interfaces	
Video In	4x analog composite: NTSC/PAL; BNC connector 75 Ohm switchable, 0.7 - 1.2Vp-p
Alarm In	4x (non-isolated closure contact type), max. activation resistance 10 Ohm, 6 position spring clamp contacts
Relay Out	4x, 30 Vp-p, 2 A 8 position spring clamp contacts
COM Port	1x RS232/422/485, 6 position spring clamp contacts
Audio Modules	
Audio Standard	G.711; 300 Hz - 3.4 kHz
Audio Data Rate	80 kbps
Audio Sampling Rate	8 kHz
Line In	Stereo jack 3.5 mm, 9 kOhm typ., 5.5 Vpp max.
Mechanical	
Dimensions (HxLxW)	44'210'440 mm (17.32'1.73'8.27 in)
Weight	Approx. 4.0 kg (8.4 lb) with 4 modules
Environmental	
Input Voltage	12 VDC, redundant (dual inputs)
Power Consumption	Approx. 60 VA, fully equipped
Heat output	205 BTU/h
Operating Temperature	0°C - +50°C (+32 °F - +122 °F) ambient temperature
Humidity	20 - 80%, atmospheric humidity (not cond.)

1 Building Integration System

Building Integration System



Integrated management of intrusion alarm, fire detection, CCTV, access control, life safety, and facility systems
 Customizable user interface
 Extensive software options and upgrades
 AutoCAD® formal support
 Accessible through web based connections
 Graphic site plan maps
 Device command and control
 Standard PC platform
 Open standardized interface for connecting to other building automation devices
 Cross device manual or automatic control

Today's buildings have systems ranging from temperature control to video monitoring. The Building Integration System (BIS) software platform integrates security and building management. The BIS architecture was designed as an innovative suite of enterprise monitoring and control software applications or engines that share a common web server core. Each engine - Security, Access, Video, and Automation - can function as a basic stand-alone application, or can be combined into a sophisticated, integrated system. Add all the engines that best suit your building at once, or add individual engines or software options as you need them. The BIS user interface is flexible, dynamic, and provides a unified point of control to manage different systems. You can customize the interface to meet your specific building management requirements.

System Overview

BIS Engines

1. BIS Security Engine

You can command, control, and administrate multiple control panels. The Security Engine supports:

- The G Series Control Panels
- The D6600 Communications Receiver/Gateway with NetCom capability

2. BIS Access Engine

You can control standalone and distributed enterprise electronic access control systems. The Access Engine:

- Supports Bosch Access Modular Controller (AMC) access controllers and accessories
- Easily configures access control hardware
- Remotely controls devices
- Supports ID badges and video verification options

3. BIS Video Engine

You can manage and integrate video sources such as Allegiant™ Matrix Switcher and Digital Video Recorders DiBos (includes the alarm contacts), Divar, IP cameras, and other web-based video servers. Features include:

- Easy to use browser based user interface
- Multi-monitor support
- Ability to simply point and click to view live and archived video
- Same look and feel for any video stream
- Ability to view cameras from different sources in same window
- Automatic live or archived video view on alarm
- Ability to perform Allegiant's control commands
- Recorder supervision and control
- Device monitoring and video loss
- Digital zoom for any video source

Security you can rely on.

BOSCH

2.1 Building Integration System

4. BIS Automation Engine

You can combine systems from various manufacturers into one convenient user interface. Object linking and embedding for process control (OPC) allows diverse electronic building equipment to exchange data.

Facility management systems include:

- Lights
- Temperature and ventilation
- Elevators
- Life safety

Structure

The BIS architecture can include a compact single-workstation, dedicated system network, and networking through local-area networks (LAN) or wide-area networks (WAN) with intranet structures. You can link specific workstations and specify the number of concurrently logged-on users. Users read information directly from each subsystem, including information about detector locations and available controls.

Three-tier Technology

BIS uses three-tier technology in its system architecture. Each and every level can exist on one computer or across multiple computers, and can run independently without logged-on users. The three levels are:

Operator Interface and Request Level

BIS divides this tier between users (profiles) and different computers. Dividing the tier allows BIS to tailor data for each user based on requirements. A standard computer with the required 1 GHz processor and 1 GB RAM acts as the server. Standard network components connect to the application and linking level.

Application and Linking Level

BIS processes incoming data and establishes links between subsystems. This level also establishes links to internal parameters such as calendar and time functions. These links are shown visually on the operator interface and request level and through automatic controls on subsystems. A central server connects to the operator interface.

Data Input and Storage Level

BIS links to all subsystems and stores data. OPC interfaces and servers connect the software across the subsystems.

Functions

OPC Interfaces

OPC is a standard distributed throughout the world in the automation sector. BIS uses OPC so that software for different equipment can connect and interact.

OPC has vital advantages for the connecting subsystems:

Many system manufacturers have OPC interfaces (OPC servers), eliminating the need to program or adapt interfaces for each system.

The interface supplies information about a system and its associated peripheral elements.

User Interface

The user interface is based on web pages so that you can adjust it according to your needs. For example, you can:

- Increase resolution
- Display the interface across multiple monitors (four maximum)
- Incorporate specific logos
- Tailor the interface for different users

State Machine

The state machine is the core of the BIS system and is integrated at the application level. The state machine processes data and combines subsystem messages with internal conditions such as date and time functions.

Graphic Site Plan Maps

BIS uses AutoCAD .dwf files for graphic location maps of site plans and detectors, allowing you to view one-layer two-dimensional graphics and site plans showing all detectors. Use AutoCAD to process other standard graphic formats such as .bmp, .wmf, .jpg, and .dxf.

Create one plan for each complete floor to minimize the number of graphic files. When you use AutoCAD to define individual rooms or sections on a floor as views, BIS adds the rooms as sub-locations. During a real-time alarm event, BIS automatically warns into the affected sub-location or view. BIS users can manipulate the graphic and room in or out.

Control and Command Devices

BIS shows an overview of connected systems, peripheral devices such as cameras and detectors, and BIS virtual devices such as operators and event logs, with the respective line conditions, type, and locations for the systems and devices. Operators can directly control and manage the systems and detectors using:

- Action buttons in an HTML page
- Detector icons in the site map
- Detector addresses in the overview

Video Overlay

To show video images from cameras or matrix outputs (such as monitors) on client workstations rather than on general monitors, supply the video images through the Ethernet. You can click on a camera icon on a graphic location map to show live camera images. You can also record images locally. The Video Engine allows you to control Auto Dome Cameras directly.

Firewall

Firewall software is part of the BIS platform and protects the system from attack outside the network. The firewall software monitors and filters data packets and network connections according to defined criteria. The firewall software ensures that the server receives authorized connections without establishing unauthorized outgoing connections. The firewall software for BIS is a protective measure. Do not use it to replace other firewall systems.

Detector Points

Detector points include:

- Cameras, inputs and outputs.
- Peripheral elements of third party OPC servers.
- Virtual detector points such as operators, system alarm points, and event log occupancy levels.

Action Plans

Although location maps are primary information sources for users, action plans and miscellaneous documents also supply information to users. You can add action buttons to the action plans or documents.

The action plans and miscellaneous documents are based on HTML format (web pages) and can be edited using standard programs such as Microsoft® FrontPage. User requirements determine the number and contents of action plans.

Web Services

BIS is a web service system, rather than a legacy application designed as a client-server system. Advantages of the BIS web services approach are:

- BIS provides alarm management software features and expands current system capabilities.
- A web services design makes adding clients easy and economical.
- A web services design smoothly integrates external systems such as LONWORKS™, MODBUS®, BACnet®, PROFIBUS, and AutoCAD.

Installation/Configuration Notes

BIS Server, Clients, and Connection Servers

Install the BIS software on a standard computer dedicated to act as a BIS server, client, or connection server. Refer to the hardware criteria provided in the *Technical Specifications*. BIS makes installing client software easy and convenient. When a client initially connects to the BIS server, the BIS software installs components needed for BIS operation. After the installation, a user can log on to BIS. You can configure clients to use up to four monitors.

In large applications with many control panels connected to BIS, additional connection servers help to balance the load between servers.

Concurrent Users

Purchase an operator license for each concurrent user. You can define a number of users that exceeds the number of operator licenses. The operator licenses only apply to users who log on concurrently.

Network Cards and Firewalls

Add a second network card and set up a firewall for networks to provide BIS client workstation connections and other connections. The firewall is an addition to the network's firewall and is not intended to replace existing firewalls.

Log Printers

Connect log printers through a parallel or an optional serial connection. Log printers provide permanent and central records of data.

Alarm Printers

Connect alarm printers locally or through the network. Use alarm printers to print documents such as location maps and action plans.

Compatibility

You can continue to use your favorite OPC products and subsystems with BIS Engines, including these products from Bosch Security Systems:

BIS Engine	Product
Security	D9412G, D7412G, D7212G, D9412GV2, D7412GV2, and D7212GV2 Control Panels (version 6.30 or higher)
	DX4010i Serial Interface Module
	DX4020 Network Interface Module
Video	06600 Communications Receiver/Gateway
	OiBos Video System
	Divar Recorder
Access	Video IP servers and cameras
	Allegiant Video Matrix Switcher
	AMC Access controllers and accessories

4 Building Integration System

Subsystem Interfaces

Bosch or third party subsystems connect to BIS through an OPC interface. The OPC interface defines the communication. BIS always acts as an OPC client. Subsystems can connect through hardware interfaces such as V.24 or Ethernet.

Technical Specifications

Install BIS on a standard, dedicated computer with the following specifications.

Note: Bosch recommends the BIS server as a dedicated server.

Hardware Requirement

Processor: 1 GHz
RAM: Servers: 1 GB
 Client Workstations: 512 MB
Hard Disk: Servers: 40 GB with 20 GB available
 Client Workstations: 20 GB with 10 GB available
Ports: One parallel port or USB port for dongle (security key)
 One parallel interface port such as LPT1 to connect a log printer or an alarm printer
 One serial port such as COM1 to connect security system, serial printer, and bus coupler. Specific applications and configurations might require additional COM ports.
Cards: 100 MB Ethernet network card (PCI)
 One VGA board per monitor (or multiple monitor graphics card for up to four monitors)
AGP graphic card providing 65,000 colors
Drives: 48X CD-ROM drive
 3.5 in. floppy drive
Assorted Hardware: PCI system bus slots for video card and network card
 Keyboard and mouse
 Monitor

Recommended Hardware

Processor: 2 GHz Pentium® 4 processor or higher
Hard Disk: 120 GB

Software Requirement

Operating System: Windows® 2000 Professional with Service Pack 4 (SP4), Windows XP Professional SP1
Applications for Servers: IIS 5.0
Applications for Servers or Clients: Internet Explorer 5.5 with SP2, or newer

Recommended Software

Applications for Servers: Firewall software such as Sygate® Personal Firewall
 Virus checker software such as Symantec AntiVirus™

Allegiant™ is a trademark of Bosch Security Systems in the United States.

AutoCAD® is a registered trademark of Autodesk, Inc. in the United States.

BACnet® is a registered trademark of the American Society of Heating, Refrigerating and Air-Conditioning Engineers, Inc., 1731 Tullie Circle NE, Atlanta, GA 30329.

CoBox™ is a trademark of Lantronix.

Crystal Reports® is a registered trademark of Business Objects.

Divar® is a registered trademark of Bosch Security Systems in the United States.

LONWORKS® is a registered trademark of Echelon Corporation.

Microsoft®, Windows®, and SQL Server™ are either registered trademarks or trademarks of Microsoft Corporation in the United States and/or other countries.

MODBUS® is a registered trademark of Modicon.

Pentium® is a registered trademark of the Intel Corporation.

Sygate® is a registered trademark of Sygate Technologies, Inc.

Symantec® and Symantec AntiVirus™ are either registered trademarks or trademarks of Symantec Corp. in the United States.

Americas:
 Bosch Security Systems
 130 Peninton Parkway
 Fairport, New York, 14450, USA
 Phone: +1 585 223 4060
 Fax: +1 800 289 0096
 security.sales@us.bosch.com
 http://www.boschsecurity.us

Europe, Middle East, Africa:
 Bosch Security Systems B.V.
 P.O. Box 80002
 5600 JB, Eindhoven, The Netherlands
 Phone: +31 (0) 40 27 83955
 Fax: +31 (0) 40 27 86668
 emeasecuritysystems@bosch.com
 http://www.boschsecurity.com

Asia-Pacific:
 Bosch Security Systems Pte Ltd
 38C Jalan Peninjian
 Singapore 577180
 Phone: +65 631 9 3450
 Fax: +65 6319 3499
 apr.securitysystems@bosch.com
 http://www.boschsecurity.com

BOSCH

Datastbjec1 to changewithout noboe IPnnted III USA IF01U00976900-01 | 13. A. 2005

CCTV | Teclados de la serie IntuiKey de la serie KBD

@) BOSCH
Innovación para tu vida

Teclados de la serie IntuiKey de la serie KBD



- Control de varios productos con un (1) solo teclado
- Teclas programables para acceder a menús específicos del producto
- Teclas retroiluminadas y pantallas de fácil lectura
- Programación de sistema simplificada con interfaz intuitiva
- Asistencia multilingüe
- Plug-and-play con matrices, DVR y multiplexores Bosch
- Software de PC opcional que permite utilizar las teclas personalizables con procedimientos de comando Allegiant

Los teclados digitales de la serie IntuiKey son teclados multiuso de funciones completas que se utilizan para controlar y programar el sistema. Además, cuentan con un joystick incorporado con funciones de giro, inclinación y zoom de velocidad variable y un diseño resistente al agua. El kit de montaje opcional permite montar el teclado IntuiKey en un bastidor EIA estándar de 48 cm.

Funciones básicas

La matriz principal de Allegiant, el videograbador digital Divar o el multiplexor System4 proporcionan la alimentación si se utilizan en una configuración local. Si la distancia es grande, la alimentación la proporcionará una fuente auxiliar opcional (se vende por separado). El teclado se conecta al sistema utilizando el cable de 3 m que se suministra. Sólo tiene que conectar el teclado para que el sistema funcione. No necesita programación adicional.

El teclado digital IntuiKey está disponible en dos modelos (KBD-Universal y KBD-Digital). La versión Universal se puede conectar a una matriz Allegiant y a videograbadores digitales Divar o a multiplexores System4 al mismo tiempo. Esta capacidad elimina la necesidad de utilizar varios teclados. El modelo KBD-Universal también se utiliza en configuraciones del

sistema ADIM que integran videograbadores con una matriz Allegiant. Las versiones KBD-Digital admiten videograbadores digitales Divar y multiplexores System4.

El modelo KBD-Universal de IntuiKey acepta tanto el protocolo del teclado Allegiant RS-485 estándar como el protocolo de Allegiant RS-232. El protocolo del teclado Allegiant RS-232 es el adecuado para comunicarse con un modelo KBD-Universal remoto en una red IP.

El modelo KBD-Universal de IntuiKey también funciona en modo terminal con un protocolo RS-232 especial. Este modo permite que integradores externos y desarrolladores internos utilicen el modelo IntuiKey como interfaz de usuario personalizable.¹

Las teclas programables de IntuiKey proporcionan un sistema de menús que facilita la utilización del dispositivo. Estas teclas hacen que los nuevos operadores puedan programar y controlar con más facilidad, incluso los sistemas de mayor tamaño, sin tener que memorizar comandos del sistema.

IntuiKey cuenta con una función de selección rápida de menús que proporciona un acceso inmediato a las pantallas que se utilizan con más frecuencia. También cuenta con un sencillo árbol de menús para programar todos los ajustes avanzados de la cámara y del sistema. Los idiomas disponibles en la unidad IntuiKey son inglés, español, francés, alemán, neerlandés, italiano, polaco y portugués. Puede

www.boschsecurity.com

2 Teclados de la serie IntuiKey de la serie KBD

descargar otros idiomas en la sección IntuiKey de www.boschsecurity.com. Otros idiomas son: checo, ruso, eslovaco, chino simplificado, chino tradicional y coreano.
Póngase en contacto con su representante de ventas local de Bosch Security System para obtener información sobre el protocolo de modo terminal.

Especificaciones técnicas

Especificaciones eléctricas

Tensión de funcionamiento

12- 15 VAC/CC (proporcionado por una matriz o combinación de matrices Allegiant, videograbador digital Diva, multiplexores System4 y/o una fuente de alimentación opcional)

Alimentación 5 W nominales

Señal de Allegiant	RS-485, 2 hilos, 9.600 baudios, 8 bits, sin paridad, 1 bit de parada RS-232, 3 hilos, 9.600 baudios, 8 bits, sin paridad, 1 bit de parada
Señal de multiplexor/DVR	RS-485, 2 hilos, 19.200 baudios, 8 bits, sin paridad, 1 bit de parada
Señal de modo terminal	RS-232, 3 hilos, 9.600 baudios, 8 bits, sin paridad, 1 bit de parada
Señal de consola	Negociación RS-232 RTSCTS, 19.200/57.600 baudios, 8 bits, sin paridad, 1 bit de parada

Especificaciones mecánicas

Acabado	Carbón
Anchura	327 mm
Profundidad	190 mm
Altura	75 mm
Peso	1,1kg
Conector Allegiant	RF 11 alimentación/datos
Conector para multiplexor/DVR	RF-11 alimentación/datos
Conector de alimentación auxiliar	Conector tipo bayoneta (opcional)
Conector de consola	D-Sub macho de 9 patillas

Especificaciones medioambientales

Caja de protección	Resistente al agua
Temperatura	
Funcionamiento	De 0°C a 50°C
Almacenamiento	De -20°C a 50°C
Humedad relativa	De 10% al 90%, sin condensación

Cumplimiento de la normativa del producto

Compatibilidad electromagnética (EMC)	Conforme con las directivas de la FCC, apartado 15, ICES-003 y CE
Seguridad del producto	Conforme con las directivas de la CE y las normas UL, CSA, IN e IC

Compatibilidad

Allegiant	Compatibilidad con todos los antiguos sistemas mediante el protocolo de velocidad variable Firmware 5.3 de CPU y superior, versión del 6/94)
Divar	Todos los modelos
System4	Compatibilidad con todos los multiplexores System4 antiguos

Teclados de la serie IntuiKey de la serie KBD 13

Pentium es una marca comercial registrada de Intel Corporation.
Windows y Windows N- son marcas comerciales registradas de Microsoft Corporation.
Allegiant, ADIM, Diver y System4 son marcas registradas por Bosch Security Systems, Inc. en la oficina de patentes y marcas comerciales de Estados Unidos.

Información sobre pedidos

Modelo | Descripción

KBD-Universal

Teclado universal IntuiKey para utilización con pantallas LCD de Allegiant, Diver y multiplexores System4.

KBD-Digital

Teclado digital IntuiKey para utilización con grabadoras de video digitales **Oivar y multiplexores de la versión System4**

Accesorios de hardware

Unidad de alimentación KBD-120PS

Fuente y cable de alimentación de 120 VCN15 VCC, 600 mA, 50/60 Hz

Unidad de alimentación KBD-220PS

Fuente y cable de alimentación de 220-240 VCN 15 VCC, 600 mA, 50/60 Hz

Kit de extensión de teclado LTC 8557/50

Kit de conexión para teclado remoto, hasta 1,5 km, incluye fuente de alimentación de 230 VCA, 50 Hz

Kit de extensión de teclado LTC 8557/60

Kit de conexión para teclado remoto, hasta 1,5 km, incluye fuente de alimentación de 120 VCA, 60 Hz

Cable de teclado LTC 8558/00

opcional, 30 m de longitud

KBD-RACK

Kit de montaje en bastidor para KBD-Universal y KBD-Digital de 19 pulgadas

Accesorios de software

KBD-SFTCFG

Software de configuración para los teclados de la serie KBD



Spare
Bosch Security Systems EMI/EMC
Edificio Europa 1, ú.c. 3 Fl. 3
Cra. Puzosán, Alcobendas km.16
28109 Alcobendas (Madrid)
Teléfono: +34 914840311
Fax: +34 91682 4188
essec@intuikey.com
www.boschsecurity.es

América
euschSecuritySystems
130 Pennon Parkway
Pittsford, New York 14550, USA
Phone: +1 585 223 4000
FAX: +1 585 223 4000
IntuiKey@bosch.com
www.boschsecurity.us

América Latina
Robert Bosch Int'l
Security Systems Division
Via Piranguera, Km 98
CEP: 13055000
Campus, São Paulo, Brazil
Phone: +55 19 3745 2880
Fax: +55 19 3745 2882
lat.amsec@intuikey.com
www.boschsecurity.com

Represented by

© Bosch Security Systems, 2008. Información. L.L.O.s a orribq; Im previo IFO
F2188661089 | Our. esES, Vt, 2 Mar 2008

D8128D OctoPOPIT 8-Point Expander

Prod. ID D8128D



The D8128D OctoPOPIT module combines the functions of the 08125 POPEX module and the 08127/09127 POPIT modules to provide eight off-board points in a single module. The D8128D OctoPOPIT and 08125 POPEX modules can be wired in parallel to the ZONEX Bus terminals on the same panel.

• System Overview

The module can be installed inside the enclosure of the control panel, or the module can be installed in a separate enclosure and connected to the panel.

• Features

- Provides point identification of initiating devices
- Expands the number of points in the system
- OIP-switch programmable

• Basic Functions

Address switches

There is a set of dipswitches to set point assignments and line termination. Switches 1 to 4 assign the sensor loops to point numbers on a compatible control panel. Switch 5 sets the line termination.

Point dipswitches

Activate or deactivate each point connected to the module by turning its respective dipswitch to the closed or open position. The point dipswitch can be used to deactivate conflicting points.

• Certifications and Approvals

UL Standards UI1610, Central-Station Burglar-Alarm Units
 UL1635, Digital Alarm Communicator System Units
 UL464, Audible Signal Appliances
 UL609, Local Burglar Alarm Units and Systems
 UI1023, Household Burglar-Alarm System Units
 UL985, Household Fire Warning System Units
 UI1076, Proprietary Burglar Alarm Units and Systems
 UL864, Control Units for Fire-Protective Signaling Systems

• Planning

If the module is installed in a separate enclosure, it can be placed up to 200 ft. (61 m) from the control/communicator. The module can be wired to the control/communicator using the module's terminal strip or using Molex connectors. The Molex connectors are useful when multiple D8128D modules are in use. The terminal strip is easier to use in cases when the module is connected directly to the control/communicator.

Each module uses 51 mA (worst case), which can affect the number of units that can be connected on a single wire run. Apply the wiring considerations provided in Technical Specifications.

• Technical Specifications

Compatible Panels	D9412G, D7412G, D9412, D7412, D9tt2, D7212, 0911281, D7212B1
Connections	For modules installed 200 ft. (61 m) from the control/communicator: Standard 4-conductor 22 AWG (0.8 mm) shielded wire
Environmental Considerations	
Relative Humidity:	5% to 85% at +86°F (+30°C), non-condensing
Temperature (Operating):	+32°F to +120°F (0°C to +49°C)
Loop	
Resistance:	100 Ω maximum
Response Time:	1 second (supervised with a 1 k Ω end-of-line resistor)
Power Requirements	
Current (Maximum):	51 mA per module (all points shorted at 13.8 VDC)
Voltage (Operating):	10.2 VDC to 13.8 VDC, supplied by panel

Security you can rely on

BOSCH

● **Hardware Options**

D137 Mounting Bracket



Used to mount accessory modules in 08103, D8108A, D8109, and D8109L Enclosures.

D8t03 Enclosure



Steel enclosure measuring (HxWxD) 16 in. x 16 in. x 3.5 in (40.6 cm x 40.6 cm x 8.9 cm).

D8t08A Attack Resistant Enclosure



Required for UL Listed Commercial Burglary applications. UL Ustetd for Central Station Fire and Local Fire (NFPA 72). Lock and key set (D101 F) included.

D8109 Fire Enclosure



A 16-gauge (1.5 mm) red steel enclosure for control/communicators. UL Listad for Central Station Fire, Local Fire, and Remole Station Fire (NFPA 72). Lock and key set (D101 F) included. Measures (HxWxD) 16 in. x 16 in. x 3.5 in (40.6 cm x 40.6 cm x 8.9 cm).

Bosch Security Systems
130 Perinton Parkway
Fairport NY 14618
Phone: (888) 289-0096
Fa.: (585) 223-9180
www.boschsecurity.us

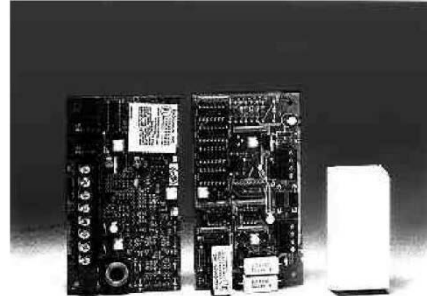
Specifications are subject
to change without notice
47833C

D8125 and D9127 Addressable Expansion Modules

Specifications

Features

- Provides point identification of initiating devices
- Supervises wiring to devices for circuit integrity
- Compatible with 08112, 08112G & E Series, 09112, 0911281, 0721281, 07212, 07412, 09124 and 9412 Control/Communicators
- Expands the number of points in the system
- Compact size
- Terminal connections for reliability
- Multiplex technology
- Low installation costs



D8125 and D9127 Addressable Expansion Modules

Description

Radionics' 08125 and 09127U/T Expansion Modules are a proven multiplex technology combining zone/point supervision with individual device addressing on one pair of wires. The control/communicators use the 08125 to provide for expansion beyond the standard number of zones up to a total of 240 points. Each 08125 module can fully supervise 120 09127U/T (Untampered and Tampered) POPITs.

The 09127 is a compact, addressable device. Future system expansion is very economical as they can be spliced in anywhere along the 2-wire data expansion loop from the 08125 module. Four screw terminals provide reliable connections for the data expansion loop and supervised sensor loop wiring.

A 33k WEOL resistor is provided to be installed at the furthest point on the loop for proper supervision.

Application

The 08125 and 09127U/T Modules are used when there is a need to expand the appropriate control/communicators beyond their standard number of on-board initiating zones or points.

Installation

The 07412 control/communicator uses one 08125 expansion module to provide a maximum of 40 additional points.

Up to two model 08125 expansion modules can be used with the 08112, 09112, and 09412 control/communicators. Each 08125 installs in the control panel enclosure or in an adjacent approved enclosure. You can supervise up to 119 09127 POPITs with each 08125 on a 09412 and 67 POPITs on 07412.

The 09127U/T POPIT modules are suitable for applications where specifications call for point identification from each initiating device or series of devices. The units are small, and easily installed in standard outlet boxes, above false ceilings, closets, or other accessible locations.

Install, test and maintain these devices according to their Installation Guides, NFPA 72, Local Codes and the Authority Having Jurisdiction. Failure to follow these procedures may result in failure of the devices to operate properly. Radionics is not responsible for devices that are improperly installed, tested and maintained.



radionics

A member of the
Bosch Group

Specifications

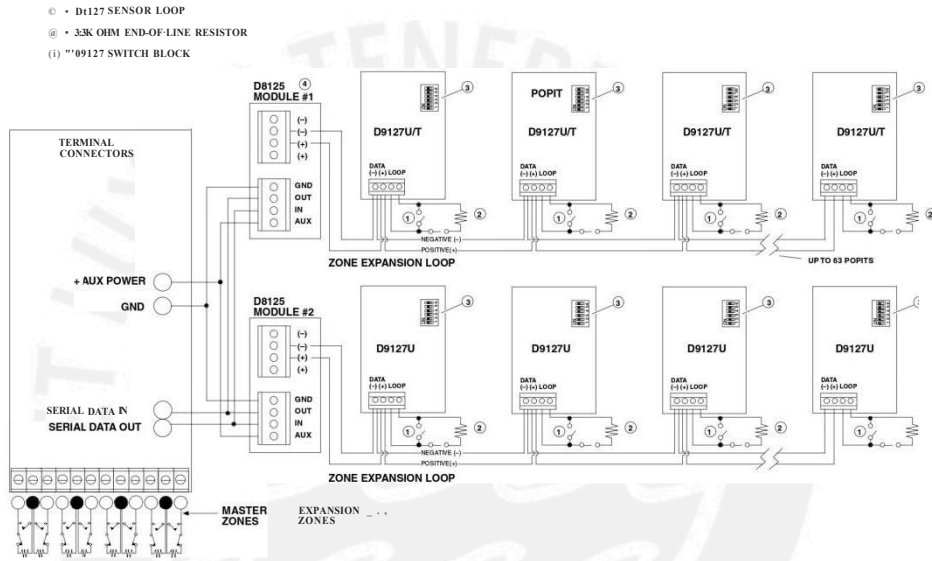
08125, 09127U/T Specifications	
Operating Voltage	Nominal 12 VOC supplied by control/communicator
Operating Current	0.5 mA per 09127U/T module 50 mA per 08125 module
Dimensions (H x W x O)	5 in. x 3 in. x .75 in. (12.7 cm x 7.6 cm x 1.9 cm)

Listings and Approvals

Underwriters Laboratories
CSFM
FM

Ordering Information

Model	Description
08125	08112, 09412, 09112, Expansion Module
09127U/T	Point of Protection Transponder



D8125, D9127U/T Wiring Connections

1 s o o o 2 ©
 CERTIFICATE NO. A5137

© 2001 Radionics, a division of Oetecion Systems, Inc.
 PO Box 80012, Salinas, CA 93912-0012 USA
 Customer Service (800) 538-5807

75-07506-000-0 8/01
 Specifications 08125, 09127
 L1126 Page 2 of 2

D8129 Octo-Relay Module

Prod. ID D8129



The D8129 is suitable for applications requiring Form "C" relay to operate auxiliary systems or to display fire system status at remote annunciators. Building components such as HVAC, door lock releases, and stairwell pressurization can be interfaced with the D8129 for complete system control and monitoring.

Industrial, commercial, and institutional facilities are typical installations for the D8129 module. The eight on-board relays can be programmed to activate on system alarm, system trouble, individual zone or point faults, and through remote control by authorized users.

● System Overview

The D8129 Octo-Relay module provides eight programmable Form "C" relays. Each relay provides dry contact switching rated for 1.0 amp at 12 VDC. The relays are accessed through on board screw terminal connections.

The Octo-Relay Module uses information from the control/communicator serial data output to activate the relays. On-board switches are used to configure the Octo-Relay Module for different operating modes, or to specify relay output numbers. These switches, along with panel programming options, determine the D8129's response to the serial data. Programming within the panel can activate specific relays or set of relays in response to system conditions. For the 9000 Series, slide switches are configured for specific relay output numbers, which are activated according to their programming. The D8129 Octo-Relay Module uses five slide switches with multiple setting options to configure its mode of operation. The D8129 receives serial data from the control/communicator and activates relays in response to panel conditions and slide switch settings. Relays can be programmed for remote control from a panel command center.

Each relay has continuity between the common terminal and the normally closed terminal while in the inactive state and between the common terminal and the normally open terminal in the active state.

● Features

- Programmable relay functions
- Provides 8 Form "C" relays
- 1 amp at 12 VDC relay contact rating
- Operates with the D8112 (serial bus) and 9000 Series (Zonex bus) communicator panels
- Slide switch configuration
- Allows remote control of relays
- Screw terminal connections

● Basic Functions

Output relays

Each relay output provides a normally open and a normally closed output.

Modes of operation

A slide switch with multiple switch settings can be used to configure the module for a specific mode of operation for D8112 Series systems, or programming can be used to determine relay operation for 9000 Series systems.

● Certifications and Approvals

UL Standards	UL1610, Central-Station Burglar-Alarm Units UL1635, Digital Alarm Communicator System Units UL464 , Audible Signal Appliances UL609, Local Burglar Alarm Units and Systems UL365, Police Station Burglar Alarm Units and Systems UL1023, Household Burglar-Alarm System Units UL864, Control Units for Fire-Protective Signaling Systems UL985, Household Fire Warning System Units
Approvals	BSA CSFM

● Planning

Up to four D8129 Octo-Relay Modules can be mounted in a control/communicator enclosure. For additional modules, use the D137 Mounting Bracket. The D8129 connects to a panel using the 12 VDC Auxiliary output, Serial Data Output, and common terminals.

Security you can rely on

BOSCH

● **Technical Specifications**

Board

Dimensions (HxWxD): 5.0 in. x 3.0 in. x 0.75 in. (12 cm x 7.6 cm x 1.9 cm)

Compatible Panel: 9000 Series

Connections: 16 to 22 AWG (1.5 to 0.8 mm) from the control/communicator to the module

Power Requirements

Current (Maximum): 320 mA (all relays energized)

Current (Minimum): 20 mA

Voltage (Operating): 12 VDC, supplied by control/communicator

Relay Contact Rating: Form "C" dry contact (10 amps at 12 VDC)
During pulsed output, relay maintains closure for 1 second

● **Hardware Options**

0137 Mounting Bracket



Used to mount accessory modules in 08103, 08108A, 08109, and 08109L Enclosures.

0138 Mounting Bracket, Right Angle



Used to mount accessory modules in a 09101 Enclosure.



Bosch Security Systems
130 Perinton Parkway
Fairport NY 14618
Phone: (888) 289-0096
Fa: (585) 223-9180
www.boschsecurity.us

Specifications are subject
to change without notice
7506347000F


BOSCH
Invented far life

D1255 Series VFD Keypads



- Easy to read vacuum fluorescent display (VFD)
- Easy system control with menu keys
- User controlled brightness and volume
- Installer configured menus, text, and custom functions
- Multiple or single area configurations

Each D1255 Series VFD Keypad model is an SDI bus compatible device that works with the G Series Control Panels and the D9124 Addressable Fire Alarm Panel. Each keypad model has an illuminated keypad, 16-character English language vacuum fluorescent display (VFD), and a sounder that emits eight tones.

Functions

Display

Every D1255 Series Keypad model uses words, numbers, and symbols to show the status of the security system. When several events occur, each model shows each event in order of priority.

Keys

Each D1255 Series Keypad model has 10 numeric keys and five function keys. Use the [COMMAND] key with the numeric keys to perform a function. Use the [ENT] key or [YES] key to enter your passcode. When pressed, each key emits light and a muted beep.

Audible Tones

The sounder emits eight distinct warning tones. You can adjust the volume or use a passcode to silence the tone. The tones include:

- Burglary Signal: Steady high-pitched bell tone during alarm.
- Fire Signal: Pulsed high-pitched bell tone during fire alarm.
- Entrance Warning: Intermittent beep tones during entry delay periods.
- Exit Warning: Intermittent beep tones during exit delay periods.
- Invalid Key Buzz: Buzz tone when an invalid key is pressed.
- Keypad Encoding Tone: Muted beep tone as each key is pressed.
- Trouble Buzzer: Two-tone warble during a trouble event.
- Watch Tone: Intermittent beep tone when a watch point is faulted.

System Overview

Use D1255 Series Keypad models in applications for system controllers and annunciators:

- For commercial use, install the keypad in building entrances and areas with unrestricted access. Mounting a keypad near exterior doors in hotel or business lobbies allows people to identify the type and location of the emergency.

www.boschsecurity.com

2 D1255 Series VFD Keypads

- For residential use, install the keypad near the front and rear entrances to the home. Install additional keypads in a kitchen or in a bedroom.
- Use multiple keypads in a large building with many separate areas of security. Program multiple keypads to control multiple areas.
- Install the keypad in locations that are hidden from view. Audible tones from the keypad sounder alert personnel to fire events and assist fire fighters in locating the keypad.

Certifications and Approvals

Keypad Model	Certifications and Approvals
All Models	UL365. Police Station Burglar Alarm Units and Systems UL609. Local Burglar Alarm Units and Systems UL864. Control Units for Fire-protective Signaling Systems UL985. Household Fire Warning System Units UL1023. Household Burglar Alarm System Units UL1076. Proprietary Alarm Units UL1610. Central-station Burglar-alarm Units UL1635. Digital Alarm Communicator System Units
01255, D1255R, and 01255W	CSFM
01255 Only	FMMEA

Installation/Configuration Notes

Compatibility Information

Control Panels with 09412G, 07412G, 09412, 07412, 09112, and SD18Bus 09124 07212G with firmware version 6.41 or higher

Mounting Considerations

- Do not mount any of the D1255 Series Keypad models in a location exposed to direct sunlight. Direct sunlight can interfere with screen visibility and damage internal components.
- Do not mount any of the D1255 Series Keypad models in damp locations.

Power Supplies

A compatible control panel supplies the power and data requirements to a D1255 Series Keypad model through a four-wire connection.

Wiring Considerations

Use 0.8 mm (22 AWG) or 1.2 mm (18 AWG) wire. Resistance cannot exceed 25 Ω. Each D1255 Series Keypad model includes a wiring assembly of four color-coded flying leads and one female four-pin connector.

Technical Specifications

Connections

Connections: 4-wire flying lead for data and power
Resistance: 25 Ω maximum

Environmental Considerations

Temperature (Operating), 0°C to +50°C (+32°F to +122°F)
Relative Humidity, 5% to 85% at +30°C (+86°F)

Keypad

Dimensions for 01255, D1255W, and D1255R, 11.7 cm x 21 cm x 2 cm (4.6 in. x 8.2 in. x 0.8 in.)
Dimensions for 012558: 12.6 cm x 20 cm x 3.2 cm (5 in. x 7.9 in. x 1.3 in.)
Weight for All Models, 439g (15.5 oz)
Material for All Models, CH MEI POLYLAC PA757 A8S with UV Stabilizer. UL94-H8 Fire Rated
Display Window,

- 16-character vacuum fluorescent display
- Each character is a 14-segment unit

Indicators:

- Illuminated keys
- Warning and indicating tones

Number of...

01255 Series Keypad Models Eight supervised 32 unsupervised per Control Panel

Power Requirements

Voltage, Nominal 12 VDC
Current, Idle 104 mA armed or disarmed Maximum 206 mA with keypad lit and warning tone on

Trademarks

POLYLAC is a registered trademark of CH MEI Industrial Corporation, LTD. Plexiglas is a registered trademark of Arkema.

Ordering Information

D1255VFD Keypad Off-white classic case.	01255
D1255WVFD Keypad White classic case.	01255W
D1255RVFD Keypad Red classic case.	D1255R
012558 VFD Keypad White and gray modern case.	012558

Hardware Accessories

0548 Brass Flush Mount Kit Back box and polished brass faceplate.	0548
054C Stainless Steel Flush Mount Kit Back box and stainless steel faceplate.	D54C
055 Keypad Desk Stand Portable desk stand in smoke colored Plexiglas.	055

D1255 Series VFD Keypads 13

Ordering Information

D56 Surface Mount Conduit Box White surface mount box.	D56
D56R Red Surface Mount Conduit Box Red surface mount box.	D56R



Americas:
Bosch Security Systems
130 Pennington Parkway
Isiport, New York, 14450, USA
Phone: +1 585 223 4060
Fax: +1 800 269 0096
security.sale@us.bosch.com
www.boschsecurity.us

Europe, Middle East, Africa:
Bosch Security Systems BV
P.O. Box 80002
5600 JB Eindhoven, The Netherlands
Phone: +31 40 27 83265
FLX +31 40 27 86666
emea_securitysystems@bosch.com
www.boschMC.unify.com

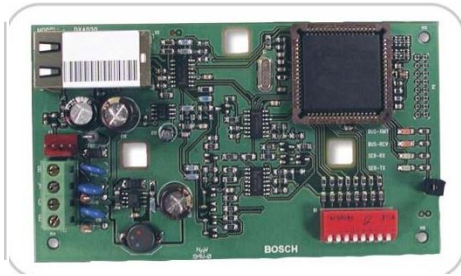
Asia Pacific:
Bosch Security Systems (Pte) Ltd
38C Jalan Pemimpin
Singapore 57160
Phone: +65 6319 3450
fax: +65 6319 3499
apr_securityMent@bosch.com
www.boschsecurity.com

Represented by

© Bosch Security Systems 2006.1 Data subject to change without notice
file 57913099 | Cur-en-US_VS_7 Feb 2006

DX4020 Network Interface Module

Prod. D DX4020



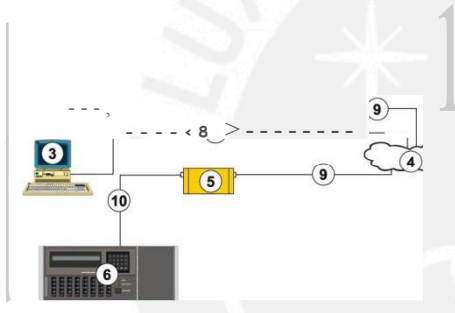
The DX4020 Network Interface Module creates two-way communications over ethernet networks for specific Bosch security control panels. Typical uses include:

Reporting with 06600 NetCom Central Station Receiver (CSR)

Remote administration with Remote Programming Software (RPS) or RPS-Lite

Connecting to a PC for programming with PC9000 or System 3T software

● System Overview



The system overview diagram shows a 06600 NetCom System using a compatible Bosch Security Systems control panel, DX4020 Ethernet Interface Module, 06600 Receiver, and a 06680 Network Adapter.

- 1 Compatible control panel, such as 09412G, 07412G, 09412, 09112, 07412, or 07212
- 2 DX4020 Network Interface Module (Ethernet)
- 3 Host PC running 06200 Programming Administrative Software
- 4 Ethernet network
- 5 06680 Network Adapter,

- 6 06600 Central Station Receiver
- 7 9000 Series Control Panel SOI Bus connection to DX4020 SOI Bus terminals
- 8 Ethernet network connection to Host PC Ethernet Network Interface Card (NIC)
- 9 Ethernet network connection to 06680
- 10 06680 connection to 06600 COM4 Port

● Features

- 10/100 network connection
- Full-duplex and half-duplex support
- Three-hole mounting pattern
- Support for static IP addresses and dynamic IP addresses (such as DHCP)
- DIP switches for address and bus programming
- Control panel light emitting diodes (LEDs)

● Functions

Control panel LEDs

There are four control panel LEDs that provide information about the transmission and receipt of data.

Red LEDs	Function
BUS RX	Data bus receives data from control panel
BUS TX	Data bus transmits data to control panel
Green LEDs	Function
SER RX	RS-232 receives data from serial device
SERTX	RS-232 transmits data to serial device

There are also two network diagnostic LEDs that provide information about the network connection. Refer to the DX4020 *Installation Guide* (PIN 49522) for details about the network diagnostic LED functions.

DIP switches

Use the DIP switches to easily assign an address to the DX4020 Network Interface Module.

Programmable IP address

Use ARP and TELNET commands from any PC to program the DX4020 Network Interface Module's IP address. The IP address can be dynamic using DHCP or the IP address can be static.

Security you can rely on

BOSCH

• **Approvals**

UL Standards **UL1610, Central Station Alarm Units
UL864, Control Unit Accessories, System**

Approvals **(E:**

• **Planning**

Compatibility information

Network interface module	DX4020 Network Interface Module
Front-end software packages	PC9000 System 3T
Remate programming	RPSIRAM IV
Alarm Transmission	06600 NetCom Central Station Receiver
Compatible control panels (version 6.3 or later)	09412G Control Panel D7412G Control Panel D7212G Control Panel 09412 Control Panel 09112 Control Panel D7412 Control Panel D7212 Control Panel
Compatible enclosures	AE1 Enclosure AE2 Enclosure AE4 Enclosure 02203 Enclosure 08103 Enclosure 08109 Enclosure

Connection considerations

The DX4020 uses a standard CAT 3/5 cable with an RJ45 plug to connect to the network. A two-wire connection from the control panel bus and two wires connect to the control panel or a power supply for O C power.

Mounting considerations

The DX4020 Network Interface Module mounts to the standard three-hole patterns in supported Bosch control panel enclosures. With the D137 mounting bracket, the DX4020 Network Interface Module mounts to other enclosures.

• **Specifications**

Environmental Considerations

Dimensions **3 in. x 5 in. (7.6 cm x 12.7 cm)**

Operating Temperatura: +32° F to+ 122° F
0° C to +50° C)

Relativa Humidity: 5% to 85% at 86° F (30° C.) non-condensing

Power Requirements

Current: **10BaseT: 80 mA nominal, 84 mA maximum
100BaseT: 100 mA nominal, 110 mA maximum**

Voltage (Operating): **12 VDC nominal**

• **Hardware Accessories**

D137 Mounting Bracket

Used to mount accessory modules in 08103, D8108A, D8109, and D8109L Enclosures.

Bosch Security Systems
130 Perinton Parkway
Fairport NY 14450-9199
Phone: (888) 289-0096
Fa: (585) 223-9180
www.boschsecurity.us

Specifications are subject
to change without notice
4998154951 B

CCTV I MHW-SM4MI Servidor de gestión

BOSCH

Innovación para tu vida

MHW-SM4M1 Servidor de gestión



- " Rendimiento avanzado gracias a un procesador 5130 dual-core Intel Xeon (2,33 GHz)
- 1333 MHz, soporte de bus frontal
- DIMMs con búfer PC2-5300 DDR2 de 1 GB (memoria: 2 X 512 MB)
- Dos adaptadores de bus host SCSI U320 monocanal para poder conectar dispositivos de almacenamiento externos
- Montaje en rack de 2U de alto y 19 pulg. de ancho
- " Protegido por HP Services

El servidor HP ProLiant DL380 Generation 5 (G5) está diseñado para aplicaciones de rendimiento avanzado que requieren un alto grado de disponibilidad y de redundancia. Gracias a sus ventiladores de conexión en caliente y a sus fuentes de alimentación, el sistema puede seguir funcionando en caso de fallo imprevisto del hardware.

Su procesador Dual-Core Intel Xeon 5140 de última generación (2,33 GHz, caché L2 de 4 MB, 65 W, 1333 FSB), y sus dos (2) DIMM (DDR2-667) con búfer PC2-5300 de 512 MB proporcionan el rendimiento y la escalabilidad necesarios para los conjuntos de pequeño tamaño del servidor central de Bosch Video Management System, al igual que cubre las necesidades de mayor rendimiento del Bosch Video Management System-NVR, VIDOS Server y VIDOS-NVR. Además, el servidor está protegido por HP Services, que incluyen una garantía estándar de 3 años (NBD).

El servidor se presenta en su versión para montaje en rack de 2U de alto y 19 pulg. de ancho con un sistema de guías desplegadas que incluye guías deslizantes universales. La versión para montaje en rack permite acceder a todos los componentes del sistema para facilitar el servicio.

Con dos adaptadores de bus host SCSI U320 monocanal, las matrices de almacenamiento SCSI externas (al igual que los sistemas de almacenamiento SCSI de BOSCH) se pueden conectar al servidor para ampliar la capacidad de almacenamiento de datos.

Funciones básicas

El servidor de gestión MHW-SM4MI ofrece la memoria y el nivel de rendimiento para estos entornos:

VIDOS Pro Suite
VIDOS-NVR
VIDOS Server
Servidor central de
Bosch Video Management System
Bosch Video Management System-NVR

Planificación

El servidor de gestión MHW-SM4MI es perfecto para los sistemas que requieren un grado de rendimiento superior y un mayor nivel de memoria como el Bosch Video Management System-NVR, VIDOS-NVR o instalaciones de servidores VIDOS de mayor tamaño.

www.boschsecurity.es

2 1MHW SM4MI Servidor de gestión

Piezas incluidas

Cantidad	Componentes
	HP DL380G5 ModFX Svr (# 1)
	HP DL380R05 ModX CTO Svr
	Kit de localización multilingüe HP
	HP X5140 DL380G5 HO Kit
	HP 1 GB HDD PC2-5300 2x512 Kit
	Disco duro de conexión en caliente HP 72 GB 10 KSAS 2.5
	Unidad DVDROM plana 8/24X ALL
	Tarjeta elevadora HP PCI-X/PCIE NHP 380G5/385G2
	Adaptador de HP Single Ch U320 SCSI Host Bus
	Controlador HO HP Smart Array P400/256
	Adaptador de servidor HP NC370T PCIe Mfn Gigabit
	Configuración HO de unidad HP Raid O
	Sistema operativo MS W2003 Srv R2 Std Edition
	Producto HP Door/dock medio
	Asistencia de hardware HP, garantía estándar de 3 años, siguiente día laborable

Especificaciones técnicas

Dimensiones(Al.xAn. x Pr.)	8,59 x 44,54 x 66,07 cm (3.38 x 17,54 x 26.01 pulg.)
Requisitos de entrada	
Tensión de línea nominal	100-132 VCA, 200-240 VCA
Corriente de entrada nominal	10 A (100 VCA), 10A (120VCA), 6,1 A (200 VCA)
Frecuencia de entrada nominal	De 50 a 60 Hz
Potencia de entrada nominal	1000/1056/1205 W
Índice BTU	3490/3680/4150 BTU/h
Salida de fuente de alimentación	Potencia nominal constante 800/850/1000 W
Alimentación (por fuente de alimentación)	Alimentación máxima 800/850/1000 W

Margen de temperatura

En funcionamiento 10° a 35 °C (50° a 95 °F) a nivel del mar con un margen de altitud de 1 °C por 304,8 m (1 °F por 1000 pies) a 3048 m (10.000 pies) sin contacto directo con la luz solar.
Margen de cambio máximo es de 10°C/h (18 F/h).
El límite superior de funcionamiento es de 3.048 m (10.000 pies) o de 70 Kpa/10,1 psia.
El rendimiento del sistema se puede ver reducido si funciona a más de 30° C o si hay un fallo en el ventilador.

Cuando no está en funcionamiento De -30 °C a 60 °C (-22 °F a 140 °F)
Margen de cambio máximo es de 20 °C/h (36 F/h).
El límite superior cuando no esté en funcionamiento es de 9.144 m (30.000 pies) o de 30,3 KPa/4,4 psia.

Humedad relativa (sin condensación)

En funcionamiento Humedad relativa del 10% al 90%, 28°C máximo con termómetro húmedo.

Cuando no está en funcionamiento Humedad relativa del 5% al 95%, 38,7°C máximo con termómetro húmedo.

Notas:

Las especificaciones técnicas generales para el servidor están incluidas en la hoja de accesorios del servidor HP DL380G5.

Las especificaciones de configuración se incluyen en la sección Piezas incluidas.

Hewlett Packard y el logotipo HP son marcas comerciales registradas de Hewlett Packard. Todos los derechos reservados. Todos los datos y dimensiones se proporcionan según la hoja de especificaciones de Hewlett Packard y están sujetos a cambio sin previo aviso.

Información sobre pedidos

MHW-SM4MI-DE Servidor de gestión Bosch Video Management System CS/NVR pequeño, NVR grande, kit de localización alemán	MHW-SM4MI-DE
MHW-SM4MI-UK Servidor de gestión Bosch Video Management System CS/NVR pequeño, NVR grande, kit de localización inglés	MHW-SM4MI-UK
MHW-SM4MI-US Servidor de gestión Bosch Video Management System CS/NVR pequeño, NVR grande, kit de localización inglés (EEUU.)	MHW-SM4MI-US

●●●●●
Bosch Security Systems, SLU
C/Hermandad de Santa Catalina, 19
28037 Madrid
Tel: +34 914 102 011
Fax: +34 914 102 056
e: info@bss.us, sales@bss.us
www.boschsecurity.us

AmerikH:
Bosch Security Systems, Inc.
130 Pennon Parkway
Ft. Lee, VA, 22049, USA
Phone: +1 800 289 0386
fax: +1 585 223 9110
security@bss.us, sales@bss.us
www.boschsecurity.us

AmerikH:
Robert Bosch Ltd
Security Systems Division
Via Jiangyin 1, 10000
CIP 13025900
Cámpinas, São Paulo, Brasil
Phone: +55 19 2103 2600
Fax: +55 19 2103 2862
als@securitysystems.bosch.com
www.boschsecurity.com

Reprinted by

© Bosch Security Systems 007 | Información sujeta a cambio | In previo aviso
3726898827 | Cur: #ES, 1/1, D. Aug 2007 | Ser: en-US, VQ 2 Jul 2007

CCTV IR-Corrected Zoom and Varifocal Lenses



IR-Corrected Zoom and Varifocal Lenses



- IR corrected for operation with high performance day/night and monochrome cameras
- 1/3-inch and 1/2-inch formats
- High-quality optics
- DC-iris and Video-iris models
- Varifocal and zoom lenses
- Zoom lenses with pre-positioning
- Reliable, robust construction

With the introduction of true day/night cameras, CCTV cameras have become more versatile - and now lenses must match the wide range of light conditions covered by those cameras. (Infrared) corrected lenses provide fully adjusted and sharp focused images in daylight and at night when used in conjunction with IR illuminators. This makes R lenses the best choice for high performance true day/night cameras.

The R range includes 1/3-inch and 1/2-inch format lenses. The 1/3-inch lenses are used exclusively for 1/3-inch type cameras. The high design standards of the 1/2-inch lenses make them a perfect match for both 1/3-inch and 1/2-inch type cameras. When used with 1/3-inch type cameras, the 1/2-inch lenses provide a more "telephoto" effect. For auto iris control, all lenses use the standard four-pin EIAJ connector, which fits directly into the camera's iris output. Varifocal lenses are DC iris direct drives, while zoom lenses have Video-iris drives. For zoom focus and pre-position control, the lenses are fitted with an 8-pin DIN connector. The IBx zoom lens also features manual iris override. Impressive optical quality is a result of ED glass elements, aspherical lenses, and multi-layer coatings. These lenses maintain focus to IR wavelengths of 950 nm.

The mechanical construction is robust enough to withstand frequent control operations of the iris, zoom, and focus functions.

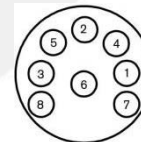
BCD
OO

=



Auto iris Connector (So/der side view)

Power	3	Video
NotUsed	4	Ground



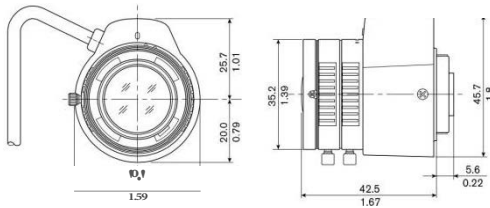
Zoom/Focus Connector (So/der side view)

Pre-pos. Zoom Pot. Wiper	5	Focus Motor Control (++near)
Focus Motor Return	6	Zoom Motor Return
3 Pre-pos. Focus Pot. Wiper	7	Pre-pos. Pot. Supply
4 Zoom Motor Control (++tele)	8	Pre-pos. Pat. Return

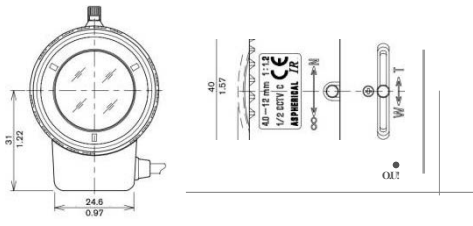
www.boschsecurity.com

2 11R-Corrected Zoom and Vanfocal Lenses

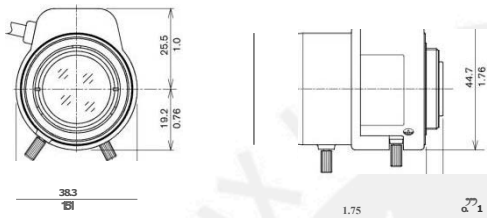
Installation/Configuration Notes



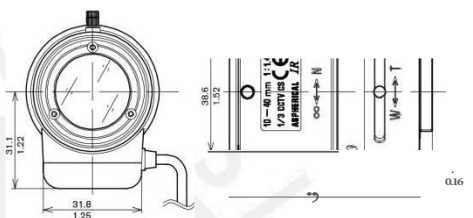
Dimensions LTC 3364/21



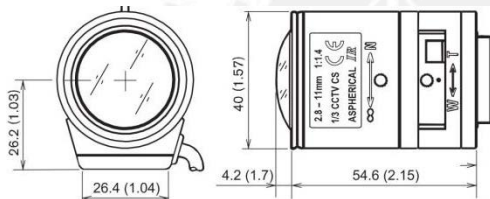
Dimensions LTC 3764/20



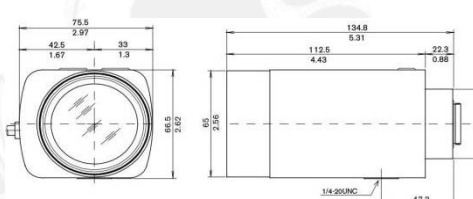
Dimensions LTC 3664/30



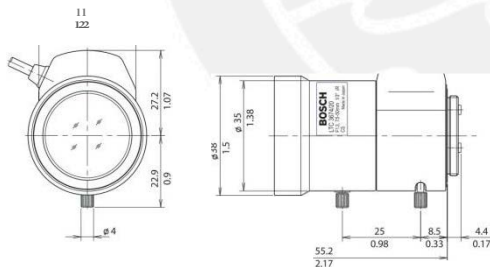
Dimensions LTC 3774/40



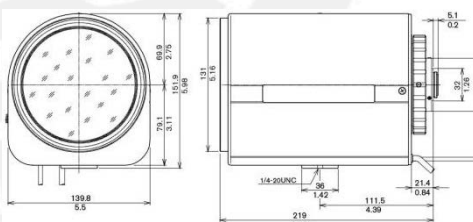
Dimensions LTC 3664/40



Dimensions LTC 3783/50



Dimensions LTC 3674/20



Dimensions LTC 3793/50

IR-Corrected Zoom and Varifocal Lenses

	LTC3364/21	LTC3664/30	LTC3664/40	LTC 3674/20
Image format	1/3inch	1/3 inch	1/3 inch	1/3inch
ZoomRange	2.1x Varifocal	2.7x Varifocal	3.9.Varifocal	6.7x Varifocal
Focal length	2.8-6 mm	3-8mm	2.8-11 mm	7.5-50 mm
Iris range far Color	F1.4 to300	F1.0to360	F1.4 to360	F1.3 to 360
Iris range far R	F1.4 to300	F1.0to 360	F1.4 to64	F1.3to64
Wavelength	400to950 nm	400to950 nm	400to950 nm	400 to950 nm
Min.Object	0.30m	0.30m	0.35m	0.40m
Oistance	(1.0ft)	(1.0ft)	(1.1 ft)	(1.3ft)
Backfocus	7.5mm	7.5mm	8.6mm	8.1mm
Oistance	(0.30 in)	(0.30in)	(0.34in)	(0.32 in)
lensmount	CS-mount	CS-mount	CS-mount	CS-mounl
Flange backdistance	12.5mm	12.5mm	12.5mm	12.5mm
Weight	59 g (0.13 lb)	60 g (0.13 lb)	79g(0.171b)	68 g (0.15 lb)
Angle of view				
1/3 • wide (HxV)	96.9°x 72.5°	93.2°x69°	97.4°x72.4°	36.6° , 27.4°
1/3 • tele (HxV)	46.7°x 35.1°	35.2°x 26.4°	26.2°x 19.7°	5.64° X4.26°
1/2 • wide (HxV)				
1/2 • tele (HxV)				
PrøPosition				
Iris Characteristics				
Iris control	OCiris	DCiris	DCiris	DCiris
Operating Voltage				
Response Speed				
Operating Current				
Input Signal				
Impedance				
Iris Accuracy				
Sensitivity				
Auto-iris Override				
Zoom Characteristics				
Zoom control	Manual	Manual	Manual	Manual
ZoomSpeed				
Operating Voltage				
Operating Current				
Focus Characteristics				
Focus Control	Manual	Manual	Manual	Manual
FocusSpeed				
Operating Voltage				
Operating Current				
Temperature Range	-10°Cto•50°C (•14°Fto•122°F)	-10°Cto•50°C (•14°Fto•122°F)	-10°Cto•50°C (•14°Fto•122°F)	-10°Cto•50°C (•14°Fto•122°F)

4 11R-Corrected Zoom and Varifocal Lenses

IR-Corrected Zoom and Varifocal Lenses

	LTC3764/20	LTC3774/30	LTC3783/50	LTC3793/50
Image format	1/2 inch	1/2 inch	1/2 inch	1/2 inch
Zoom Range	3x Varifocal	4x Varifocal	10x Zoom	18x Zoom
Focal length	4-12mm	10-40mm	8.5-85mm	8-144mm
Iris range for Color	F1.2 to 360	F1.4 to 360	F1.6 to 360	F1.6 to 360
Iris range for IR	F1.2 to 64	F1.4 to 64	F1.6 to 180	F1.6 to 360
Wavelength	400 to 950 nm	400 to 950 nm	400 to 950 nm	400 to 950 nm
Min. Object Distance	0.30m (1.0ft)	0.5m (1.6ft)	1.5m (5ft)	4m (13ft)
Back focus Distance	9.0mm (0.35in)	12.4mm (0.49in)	14.65mm (0.3inch)	13.75mm (0.3inch)
Lens mount	C-mount	C-mount	C-mount	C-mount
Flange back distance	17.526mm	17.526mm	17.526mm	17.526mm
Weight	68g (0.15 lb)	87g (0.19 lb)	900g (1.98 lb)	3840g (8.47 lb)
Angle of view				
1/3 • wide (HxV)	68.9' x 51.3'	27.5' x 20.4'	31.3' x 23.5'	34.1' x 26.0'
1/3 • tele (HxV)	23.4' x 17.5'	7.0' x 5.2'	3.28' x 2.47'	1.94' x 1.47'
1/2 • wide (HxV)	93.6' x 68.9'	37.5' x 27.5'	41.5' x 31.3'	45.1' x 34.1'
1/2 • tele (HxV)	31.2' x 23.4'	9.2' x 7.0'	4.34' x 3.28'	2.6' x 1.94'
Pre-Position			Yes	Yes
Iris Characteristics				
Iris control	DC-iris	DC-iris	4-pin Video-iris	4-pin Video-iris
Operating Voltage			8 to 15VDC	8 to 15VDC
Response Speed			approx. 2 sec	approx. 1.5 sec
Operating Current			40mA	50mA
Input Signal			VS or V	VS or V
Impedance			5k Ohm	5k Ohm
Iris Accuracy			+/- 20% of V-signal	+/- 20% of V-signal
Sensitivity			0.5-1.0Vpp of V-signal	0.5-1.0Vpp of V-signal
Auto-iris Override				Yes
Zoom Characteristics				
Zoom control	Manual	Manual	Motor drive	Motor drive
Zoom Speed			5 sec (adjustable)	3.5 sec
Operating Voltage			6 to 12VDC	6 to 12VDC
Operating Current			60mA	85mA
Focus Characteristics				
Focus Control	Manual	Manual	Motor drive	Motor drive
Focus Speed			5 sec (adjustable)	4 sec
Operating Voltage			6 to 12VDC	6 to 12VDC
Operating Current			60mA	50mA
Temperature Range	-10°C to +50°C (+14°F to +122°F)	-10°C to +50°C (+14°F to +122°F)	-10°C to +50°C (+14°F to +122°F)	-10°C to +50°C (+14°F to +122°F)

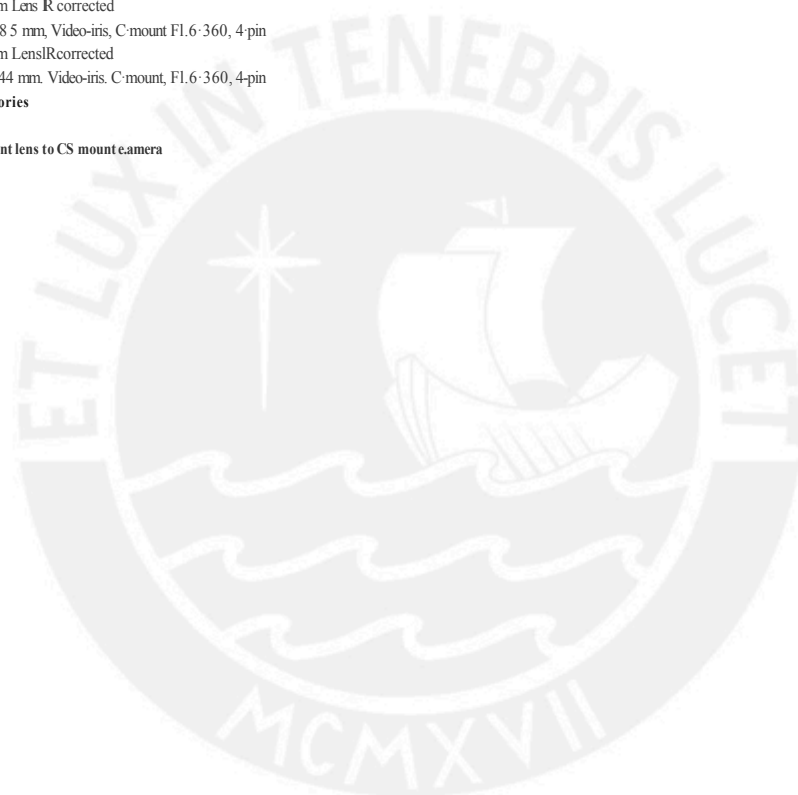
5 11R-Corrected Zoom and Varifocal Lenses

Ordering Information**Model & Description**

LIC 3364/21 Varifocal Lens R corrected
 1/3-inch, 2.8 - 6 mm, OC-iris, CS-mount F1.4-200, 4-pin
 LIC 3664/30 Varifocal Lens R corrected
 1/3-inch, 3.0 - 8 mm, OC-iris, CS-mount F1.0-360, 4-pin
 LIC 3664/40 Varifocal Lens R corrected
 1/3-inch, 2.8 - 11 mm, OC-iris, CS-mount F1.4-360, 4-pin
 LIC 3674/20 Varifocal Lens R corrected
 1/3-inch, 7.5 - 50 mm, OC-iris, CS-mount, F1.3-360, 4-pin
 LIC 3764/20 Varifocal Lens R corrected
 1/2-inch, 4 - 12 mm, OC-iris, C-mount, F1.2-360, 4-pin
 LIC 3774/30 Varifocal Lens R corrected
 1/2-inch, 10 - 40 mm, OC-iris, C-mount, F1.4-360, 4-pin
 LIC 3783/50 Zoom Lens R corrected
 1/2-inch, 8.5 - 85 mm, Video-iris, C-mount F1.6-360, 4-pin
 LIC 3793/50 Zoom Lens R corrected
 1/2-inch, 8 - 144 mm, Video-iris, C-mount, F1.6-360, 4-pin

Hardware Accessories

51374 Adapter
 converts C mount lens to CS mount camera



Americas:
 Bosch Security Systems
 130 Perinton Parkway
 Fairport, New York, 14450, USA
 Phone: +1 585 223 4060
 Fax: +1 800 289 0096
 security.sales@us.bosch.com
<http://www.boschsecurity.us>

Europe, Middle East, Africa:
 Bosch Security Systems BV.
 P.O. Box 80002
 5600 JB Eindhoven, The Netherlands
 Phone: +31 (0) 40 27 83955
 Fax: +31 (0) 40 27 86668
 emea.securitysystems@bosch.com
<http://www.boschsecurity.com>

Asia-Pacific:
 Bosch Security Systems Pte Ltd
 38C Jalan Peninjian
 Singapore 577180
 Phone: +65 6319 3450
 Fax: +65 6319 3499
 apr.securitysystems@bosch.com
<http://www.boschsecurity.com>

Represented by

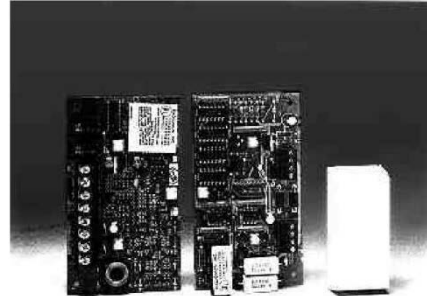
Data subject to change without notice | Printed in Netherlands 1.12. Dec 2005

D8125 and D9127 Addressable Expansion Modules

Specifications

Features

- Provides point identification of initiating devices
- Supervises wiring to devices for circuit integrity
- Compatible with 08112, 08112G & E Series, 09112, 0911281, 0721281, 07212, 07412, 09124 and 9412 Control/Communicators
- Expands the number of points in the system
- Compact size
- Terminal connections for reliability
- Multiplex technology
- Low installation costs



Description

Radionics' 08125 and 09127U/T Expansion Modules are a proven multiplex technology combining zone/point supervision with individual device addressing on one pair of wires. The control/communicators use the 08125 to provide far expansion beyond the standard number of zones up to a total of 240 points. Each 08125 module can fully supervise 120 09127U/T (Untampered and Tampered) POPITs.

The 09127 is a compact, addressable device. Future system expansion is very economical as they can be spliced in anywhere along the 2-wire data expansion loop from the 08125 module. Four screw terminals provide reliable connections for the data expansion loop and supervised sensor loop wiring.

A 33k WEOL resistor is provided to be installed at the furthest point on the loop for proper supervision.

D8125 and D9127 Addressable Expansion Modules

Application

The 08125 and 09127U/T Modules are used when there is a need to expand the appropriate control/communicators beyond their standard number of on-board initiating zones or points.

Installation

The 07412 control/communicator uses one 08125 expansion module to provide a maximum of 40 additional points.

Up to two model 08125 expansion modules can be used with the 08112, 09112, and 09412 control/communicators. Each 08125 installs in the control panel enclosure or in an adjacent approved enclosure. You can supervise up to 119 09127 POPITs with each 08125 on a 09412 and 67 POPITs on 07412.

The 09127U/T POPIT modules are suitable for applications where specifications call for point identification from each initiating device or series of devices. The units are small, and easily installed in standard outlet boxes, above false ceilings, closets, or other accessible locations.

Install, test and maintain these devices according to their Installation Guides, NFPA 72, Local Codes and the Authority Having Jurisdiction. Failure to follow these procedures may result in failure of the devices to operate properly. Radionics is not responsible for devices that are improperly installed, tested and maintained.



radionics

A member of the
Bosch Group

Specifications

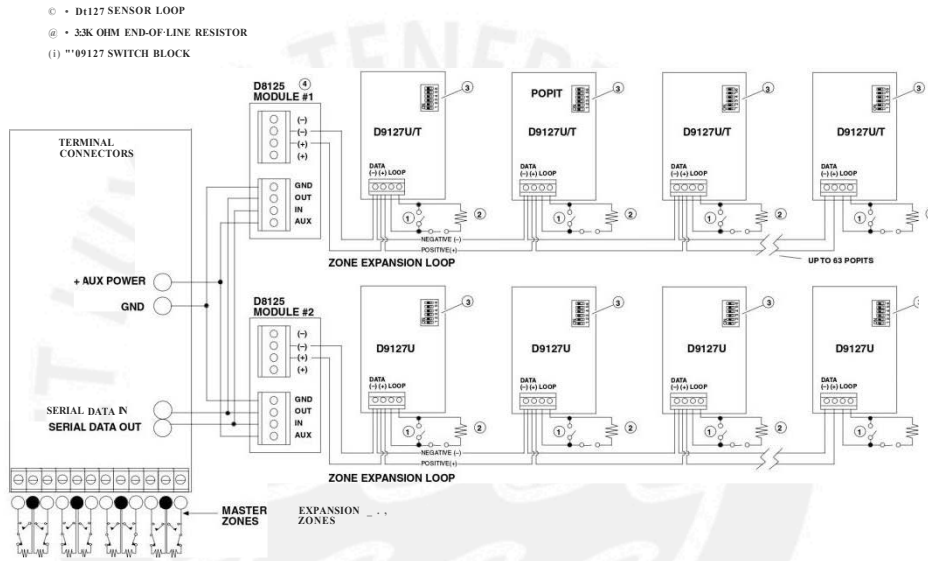
08125, 09127U/T Specifications	
Operating Voltage	Nominal 12 VOC supplied by control/communicator
Operating Current	0.5 mA per 09127U/T module 50 mA per 08125 module
Dimensions (H x W x O)	5 in. x 3 in. x .75 in. (12.7 cm x 7.6 cm x 1.9 cm)

Listings and Approvals

Underwriters Laboratories
CSFM
FM

Ordering Information

Model	Description
08125	08112, 09412, 09112, Expansion Module
09127U/T	Point of Protection Transponder



D8125, D9127U/T Wiring Connections

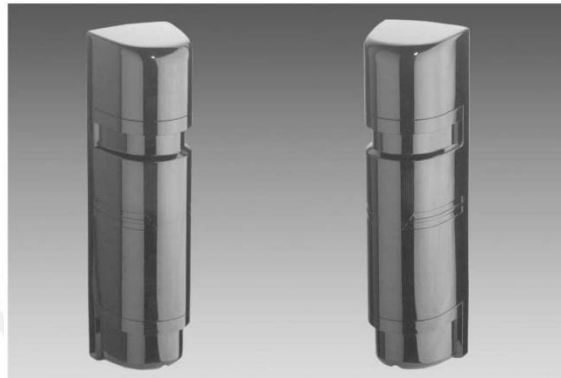
1 s o o o 2 ©
 CERTIFICATE NO. A5137

© 2001 Radionics, a division of Oetecion Systems, Inc.
 PO Box 80012, Salinas, CA 93912-0012 USA
 Customer Service (800) 538-5807

75-07506-000-0
 Specifications
 L1126

8/01
 08125, 09127
 Page 2 of 2

SIEMENS



15443 / 15444 / 15445

Barreras lineales de infrarrojo

Haz cuádruple, para empleo en exteriores

- Desde 50 m a 200 m de alcance.
- Haz cuádruple, sincronizado e inteligente, que asegura el alcance y la estabilidad en las condiciones ambientales más adversas.
- Control automático de ganancia (AGC).
- Selección de hasta 4 frecuencias de trabajo.

Altas prestaciones. El haz cuádruple inteligente actúa como una función ANO, lo que garantiza que la barrera no será activada por hojas de árboles, pequeños animales, etc. La señal infrarroja transmitida es 10 veces mayor que la necesaria para obtener el alcance máximo especificado. El diseño de la carcasa asegura una perfecta operación ante la presencia de hielo o rocío.

Control automático de ganancia. La sensibilidad del receptor es automáticamente ajustada en función de las circunstancias ambientales. De este modo, se incrementará en caso de niebla, lluvia intensa, granizo o nieve.

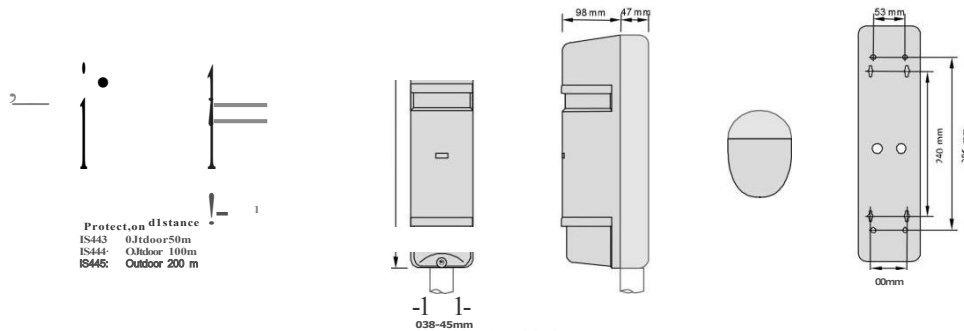
Elevada inmunidad ante las falsas alarmas. Un circuito especial de compensación de iluminación proporciona una excelente inmunidad frente a la radiación solar, luces de alumbrado de vehículos, lámparas fluorescentes o de mercurio, etc.

Building Technologies

Alcance y dimensiones

Alcance

Dimensiones



Datos técnicos

Tipo	IS443	IS444	IS445
Sistema de detección	Interrupción simultánea de ambos haces		
Haces infrarrojos	Haces con doble modulación de impulsos		
Distancias cubiertas	Ext. < 50 m	Ext. < 100 m	Ext. < 200 m
Tiempo de respuesta	50 a 700 ms, ajustable (estándar: 50 ms)		
Alimentación	12 Vcc a 30 Vcc (sin polaridad)		
Consumo de corriente	95 mA	105 mA	120 mA
Salida de alarma	- Relé (conmutador C, NC, NA) - Tiempo de activación		
Salida ambiental	- Contactos de relé		
Salida de tamper	- Contacto de carcasa NC		
Funciones	Selección de frecuencia de modulación de los haces, indicador por tonos, módulo ambiental, indicación de memoria de alarma, AGC programable, jack para test		
Ajuste dirección de los haces	Horizontal: ± 90°, Vertical ± 10°		
Temperatura de servicio	- 35° C a + 66° C		
Montaje	Exteriores		
Protecc. carcasa (EN 60529, EN 50102)	IP64		

Referencias para pedidos

Tipo	Código	Denominación	Peso
IS443	BPZ:5299920001	Barrera lineal infrarroja de haz cuádruple (50 m)	2,5 Kg
IS444	BPZ:5299890001	Barrera lineal infrarroja de haz cuádruple (100 m)	2,5 Kg
IS445	BPZ:5299500001	Barrera lineal infrarroja de haz cuádruple (200 m)	2,5 Kg
BP-200F	BPZ:5386240001	Cubierta trasera para montaje en poste (2 Uds.)	
HTF-24	BPZ:5386110001	Calefactor (2 Uds./conjunto) 24 Vcc; 860 mA	

SIEMENS



IS390, IS390H Infrarrojo pasivo para exteriores (Cobertura de abanico)

- Cobertura en abanico de 21 m (27 m con el IS390H), para las aplicaciones más exigentes.
- Evaluación de las condiciones ambientales con adaptación automática del nivel de alarma (ATO o Adaptive Threshold Decoding).
- Reducido nivel de falsas alarmas.
- Compensación real de temperatura y calefactor incorporado (IS390H).
- Función permanente de supervisión.

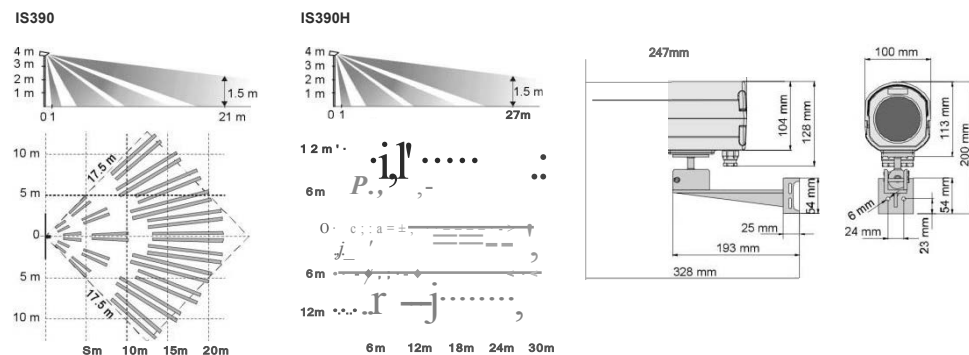
Versatilidad de empleo. IS390 es la solución adecuada para detección en exteriores. La versión "H" es apropiada para entornos con fuertes perturbaciones. Fácil montaje con brazo orientable y sencilla adaptación mediante microinterruptores.

Eficiencia. Ambos modelos pueden ser empleados para detección de intrusión o como apoyo de CCTV. Apropriados para prisiones, instalaciones militares y gubernamentales, áreas industriales y privadas, etc. dotadas o no de vallado.

Material profesional. Elevada sensibilidad de carácter uniforme gracias al empleo de un espejo de precisión y al análisis de señal controlado por microcomputador. Su adaptación automática a las circunstancias ambientales (nieve, lluvia, interferencias electromagnéticas, luces destelleantes, etc.) y su compensación real de temperatura aseguran una detección eficaz con una reducida tasa de falsas alarmas.

Building Technologies

Áreas de cobertura y dimensiones



Datos técnicos

Tipo	IS390	IS390H
Cobertura / Alcance	Abanico/ 21 m	Abanico/ 27 m
Alimentación/ rizado max. Ø a 100 Hz	10.5 a 28 Vcc (12 V nom.) / 2 VPP	Alarma < 8.2 Vcc
- Control de voltaje		
Consumo en reposo		20 mA
Calefactor		12 Vcc / 24 Vcc Ti .2 W a - 40 °C
Salida de alarma (relé NC)		28 Vcc / 250 mA (10W)
Tiempo de alarma		2 a 3 seg.
Salida de alarma colector abierto		60 Vcc/20 mA
Tamper (interruptor en tapa)		30 Vcc / 100 mA
Control: Walk test; Desarmado/Armado		Bajo < 1.5 Vcc / Alto > 3.5 Vcc
ATD (Adaptación automática de nivel de activación de alarma)		activado / desactivado
Ajustes de sensibilidad		100 / 75 / 40%
Ajuste de conteo de impulsos		OFF / ON
Temperatura de servicio	- 20 a + 60 °C	- 40 a + 60 °C
Id. De almacenamiento	- 20 a + 60 °C	- 40 a + 60 °C
Humedad relativa (EN 60721)		< 95%, sin condensación
Protección carcasa (EN 60529, EN 50102)		IP64
Rechazo EMI (80 a 1000 MHz)		> 10V/m

Detalles para pedidos

Tipo	Código	Denominación	Peso
IS390	ES2:5398270001	Detector infrarrojo pasivo para exteriores con cobertura de abanico	1.115 g
IS390H	A5Q00005094	Detector infrarrojo pasivo para exteriores con cobertura de abanico. Calefactor.	1.115 g
ISIF485	ES2:5566620001	Módulo de Instalación y software de a-uste	485 g

© Siemens, S.A.
Building Technologies
Sujeto a modificaciones

SIEMENS



IS404, IS404H Infrarrojo pasivo para exteriores (Cobertura de cortina)

- Cobertura general de 120 m (150 m con el IS392H), para las aplicaciones más exigentes.
- Evaluación de las condiciones ambientales con adaptación automática del nivel de alarma (ATO o Adaptive Threshold Decoding).
- Reducido nivel de falsas alarmas.
- Compensación real de temperatura y calefactor incorporado (IS392H).
- Función permanente de supervisión.

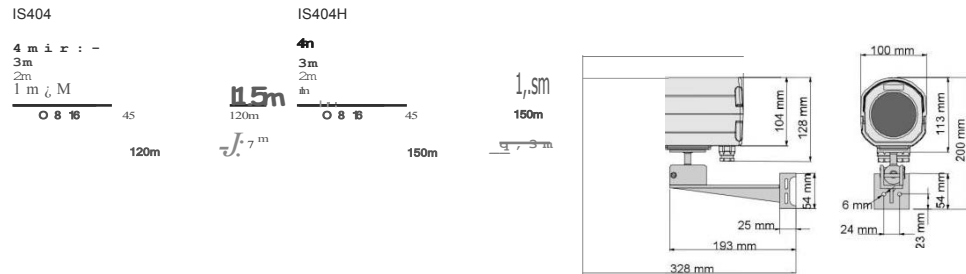
Versatilidad de empleo. IS404 es la solución adecuada para detección en exteriores. La versión "H" es apropiada para entornos con fuertes perturbaciones. Fácil montaje sobre muro o poste, con brazo orientable incorporado y sencilla adaptación a las circunstancias ambientales mediante microinterruptores.

Eficiencia. Ambos modelos pueden ser empleados para detección de intrusión o como apoyo de CCTV. Apropriados para prisiones, instalaciones militares y gubernamentales, áreas industriales y privadas, etc. dotadas o no de vallado.

Material profesional. Elevada sensibilidad de carácter uniforme gracias al empleo de un espejo de precisión y al análisis de señal controlado por microcomputador. Su adaptación automática a las circunstancias ambientales (nieve, lluvia, interferencias electromagnéticas, luces destelleantes, etc.) y su compensación real de temperatura aseguran una detección eficaz con una reducida tasa de falsas alarmas.

Building Technologies

Áreas de cobertura y dimensiones



Datos técnicos

Tipo	IS404	IS404H
Cobertura / Alcance	Cortina / 120 m	Cortina / 150 m
Alimentación/ rizado max. ϕ a 100 Hz	10.5 a 28 Vcc (12 V nom.) / 2 VPP	
- Control de voltaje	Alarma < 8.2 Vcc	
Consumo en reposo	20 mA	
Calefactor	12 Vcc / 24 Vcc Ti .2 W a -40 °C	
Salida de alarma (relé NC)	28 Vcc / 250 mA (10W)	
Tiempo de alarma	2 a 3 seg.	
Salida de alarma colector abierto	60 Vcc / 20 mA	
Tamper (interruptor en tapa)	30 Vcc / 100 mA	
Control: Walk test; Desarmado/Armado	Bajo < 1.5 Vcc / Alto > 3.5 Vcc	
ATD (Adaptación automática de nivel de activación de alarma)	activado / desactivado	
Ajustes de sensibilidad	100 / 75 / 40%	
Ajuste de conteo de impulsos	OFF / ON	
Temperatura de servicio	- 20 a + 60 °C	- 40 a + 60 °C
Id. De almacenamiento	- 20 a + 60 °C	- 40 a + 60 °C
Humedad relativa (EN 60721)	< 95%, sin condensación	
Protección carcasa (EN 60529, EN 50102)	IP64	
Rechazo EMI (80 a 1000 MHz)	> 10V/m	

Detalles para pedidos

Tipo	Código	Denominación	Peso
IS404	A5Q00005097	Detector infrarrojo pasivo para exteriores con cobertura de cortina. 120 m	1.115 g
IS404H	A5Q00005096	Detector infrarrojo pasivo para exteriores con cobertura de abanico. 150 m. Calefactor.	1.115 g
ISIF485	ES2:5566620019	Módulo de Instalación y software de <u>ajuste</u>	485 g

