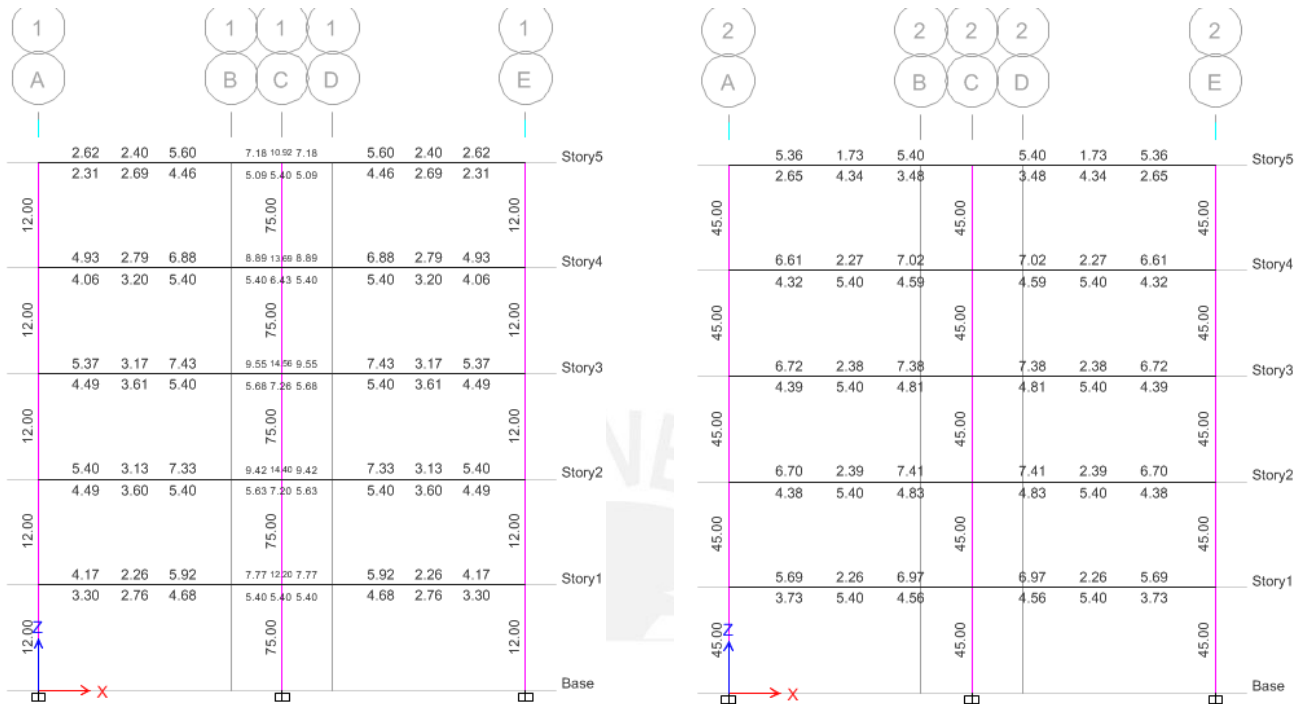
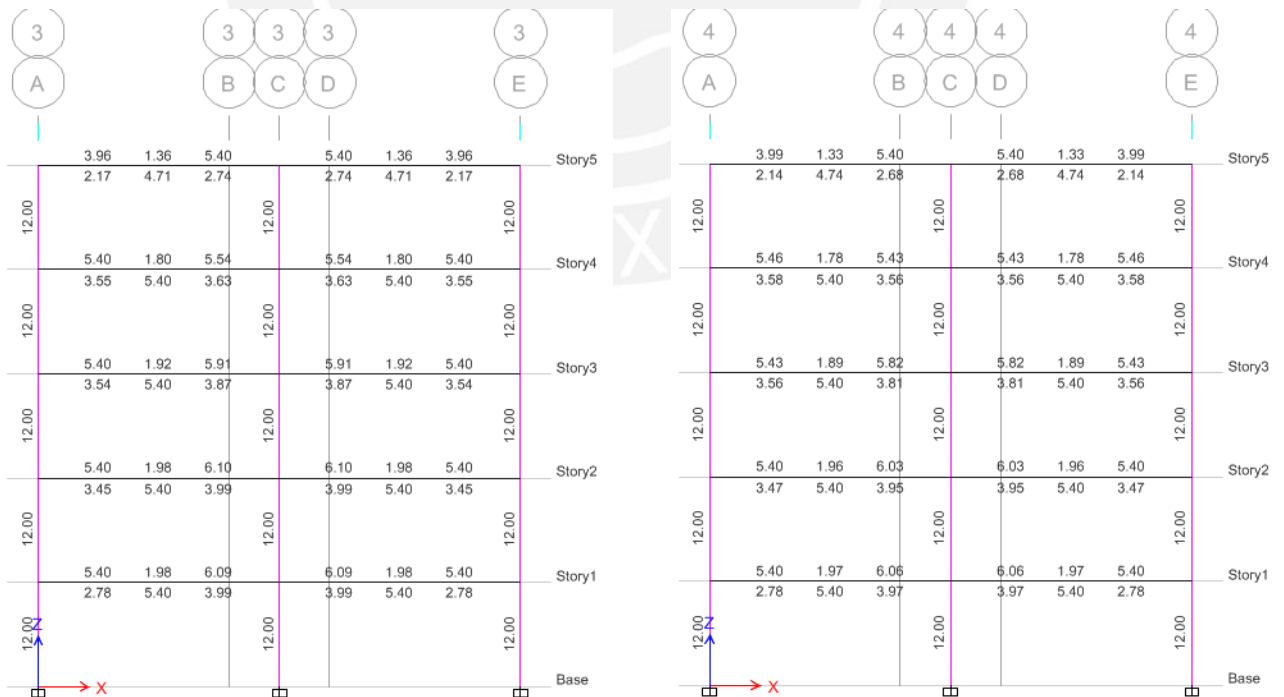


## ANEXO 1 CUANTÍAS DE DISEÑO DE ACERO OBTENIDAS CON LA METODOLOGÍA DEL DBF (cm<sup>2</sup>)



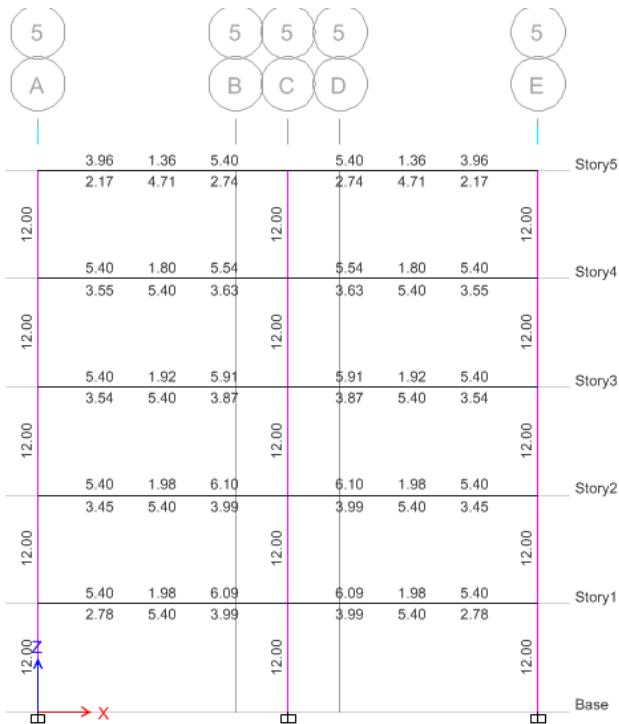
Pórtico del eje 1-1

Pórtico del eje 2-2

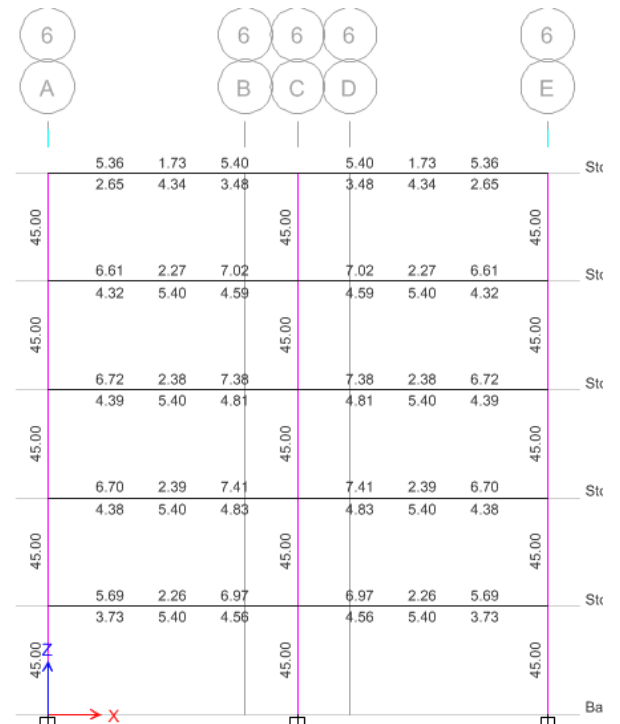


Pórtico del eje 3-3

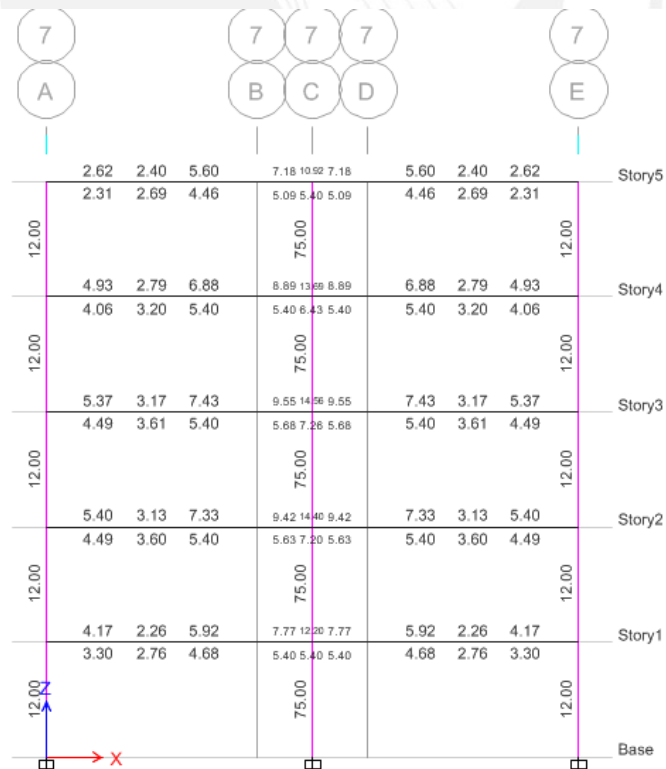
Pórtico del eje 4-4



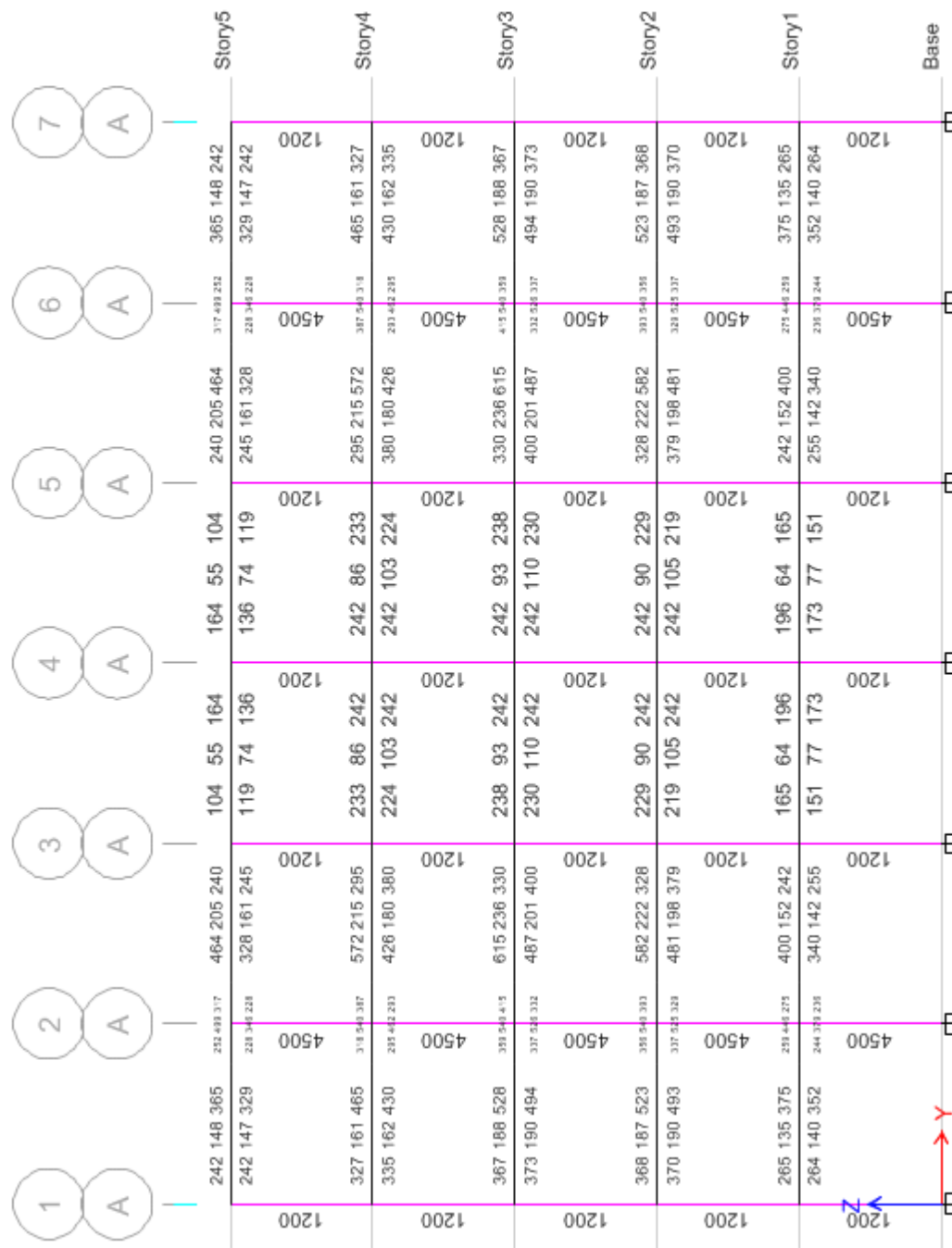
Pórtico del eje 5-5



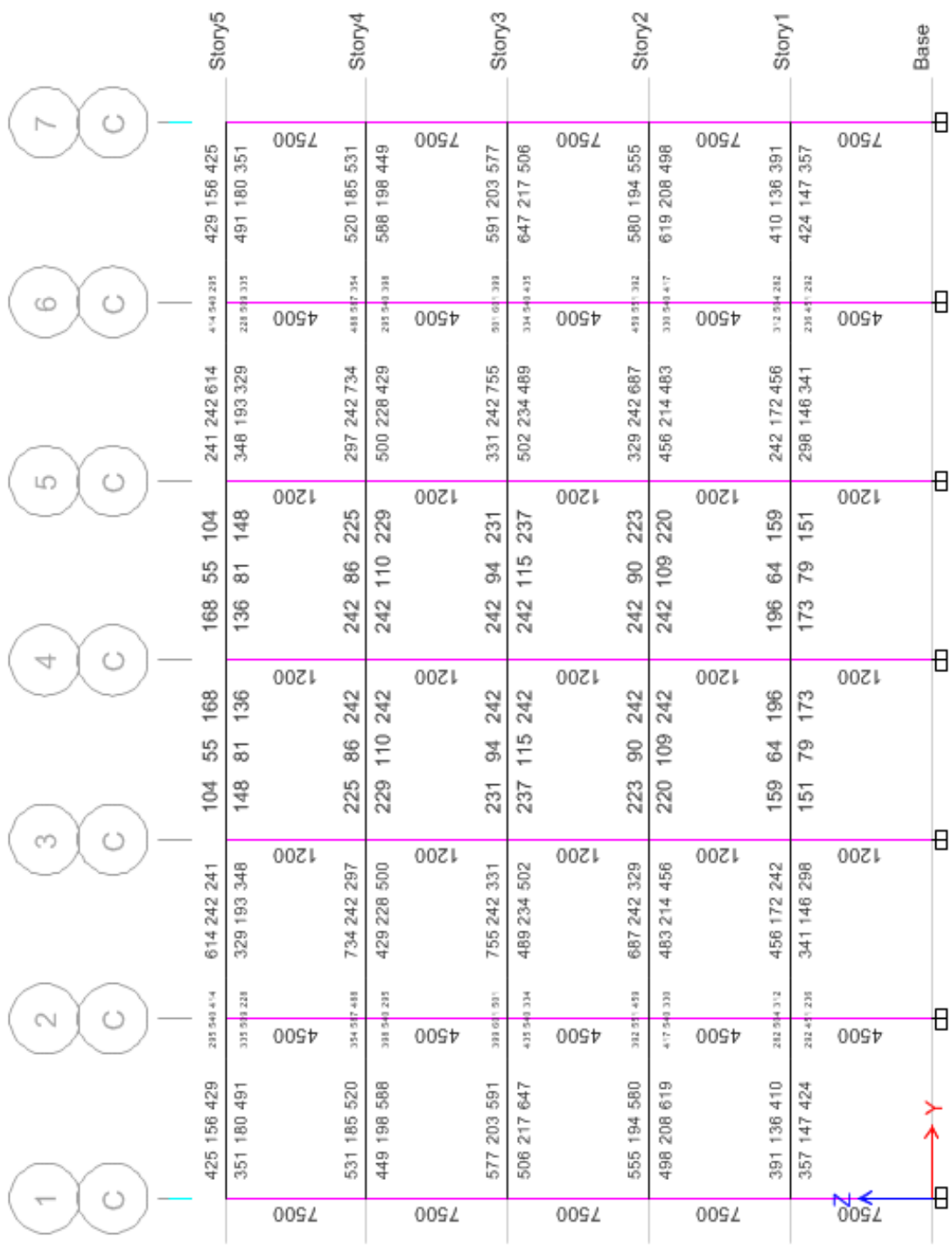
Pórtico del eje 6-6



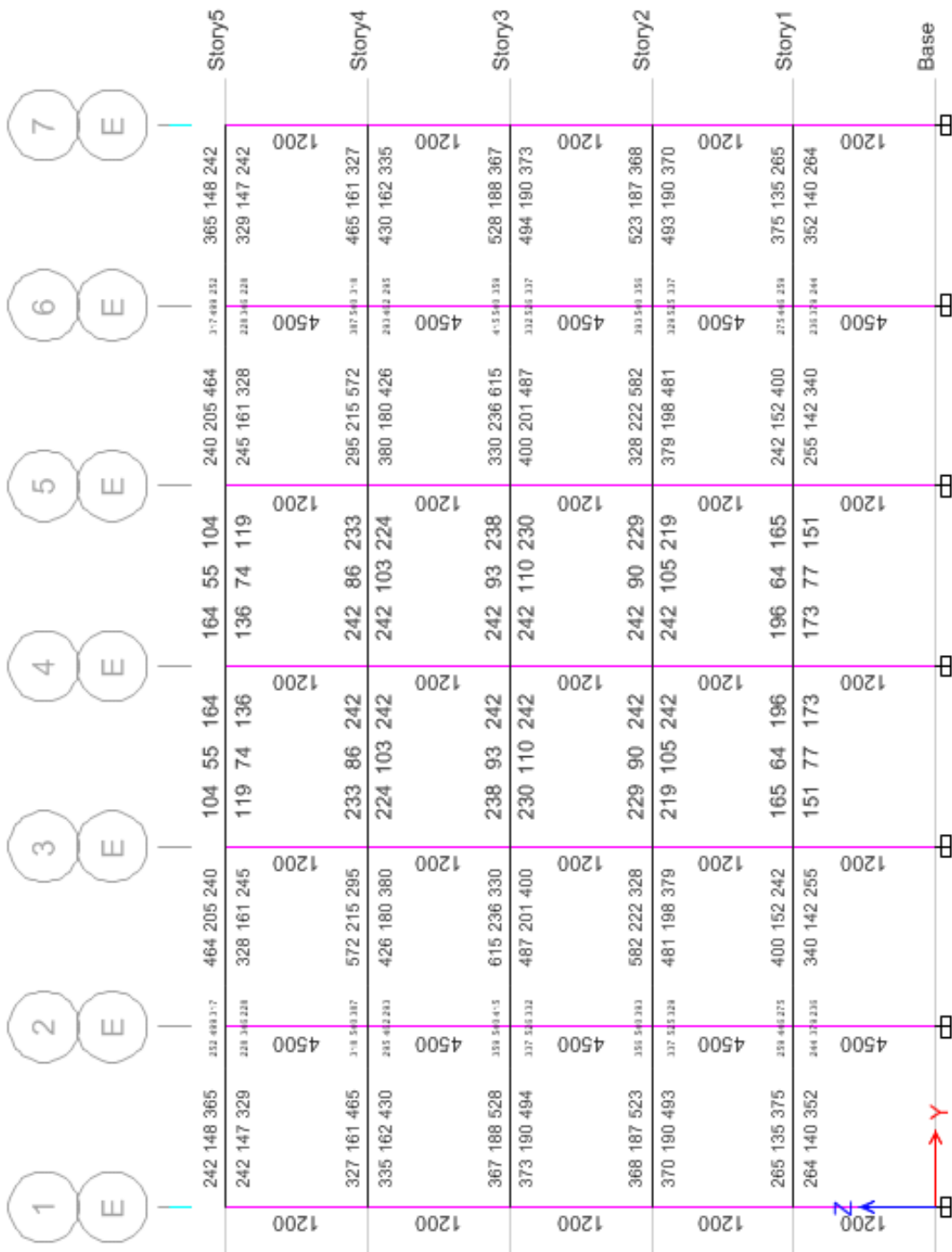
Pórtico del eje 7-7



Pórtico del eje A-A



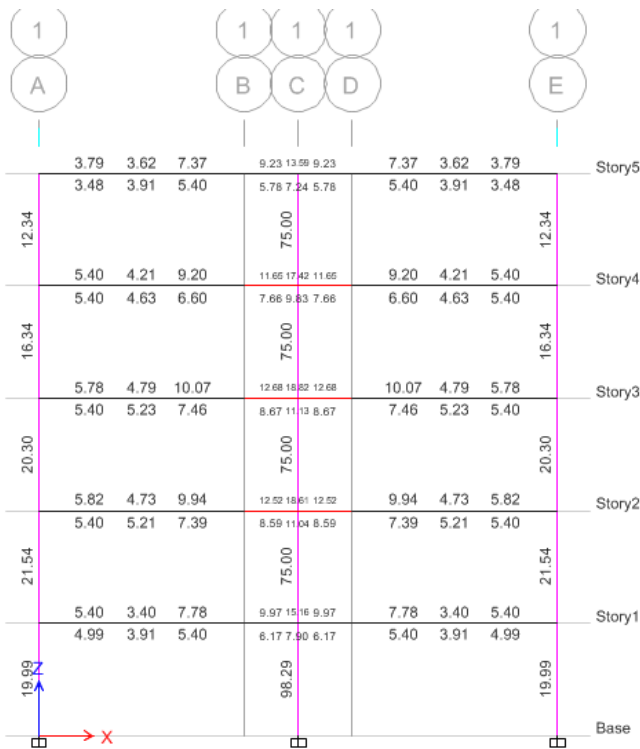
Pórtico del eje C-C



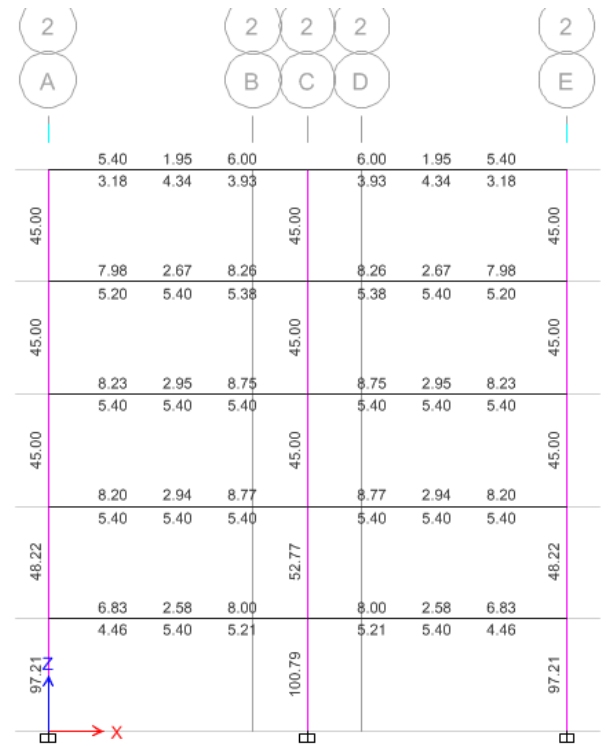
Pórtico del eje E-E

## ANEXO 2

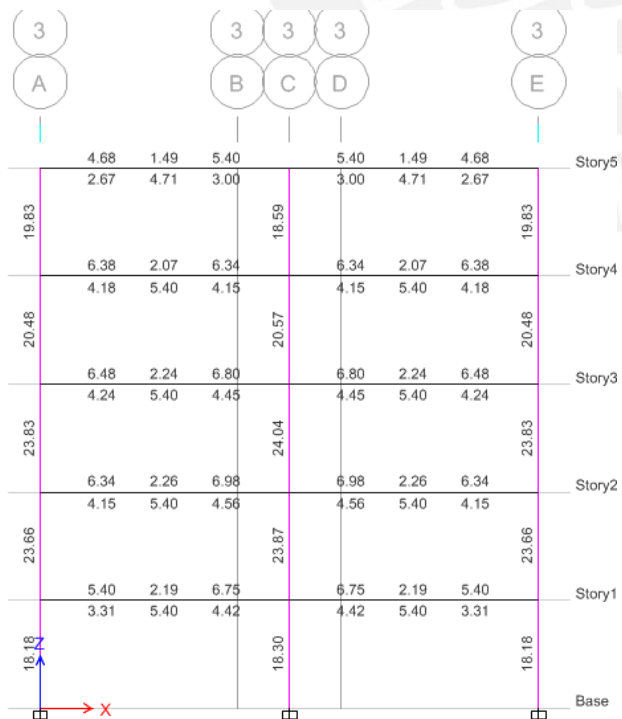
### CUANTÍAS DE DISEÑO DE ACERO OBTENIDAS CON LA METODOLOGÍA DEL DDBD (cm<sup>2</sup>)



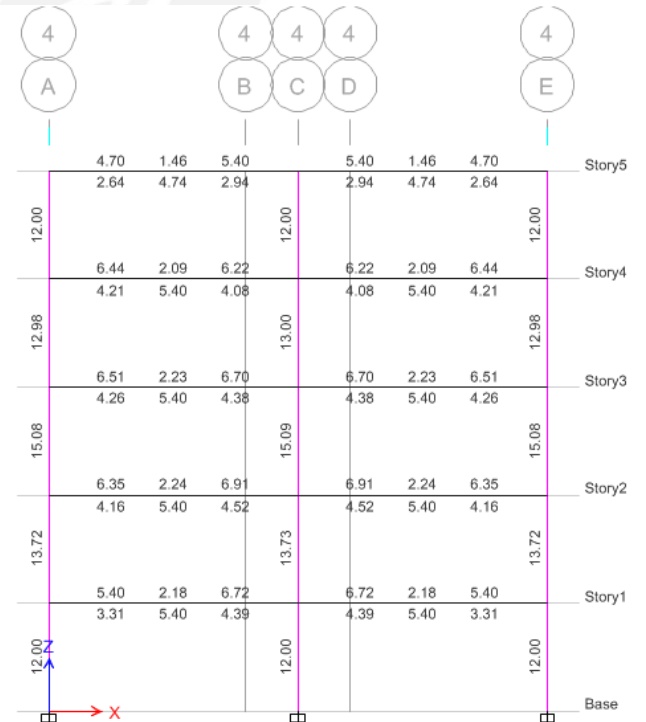
Pórtico del eje 1-1



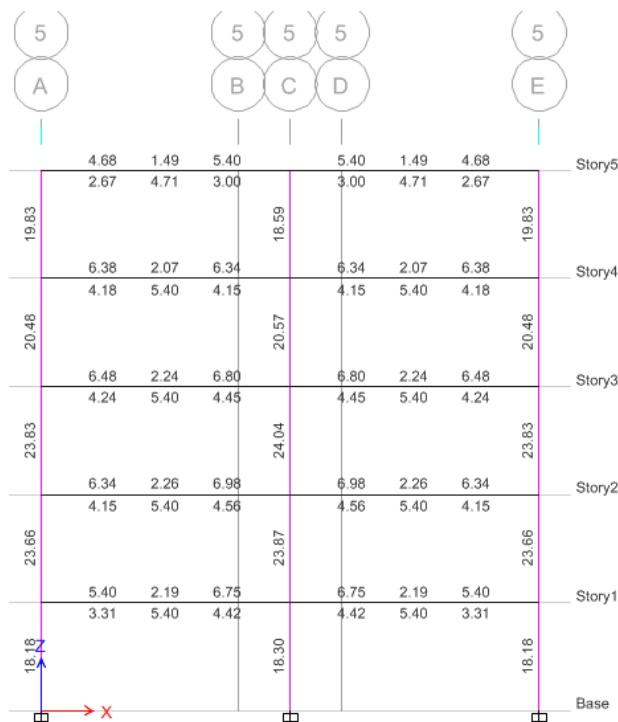
Pórtico del eje 2-2



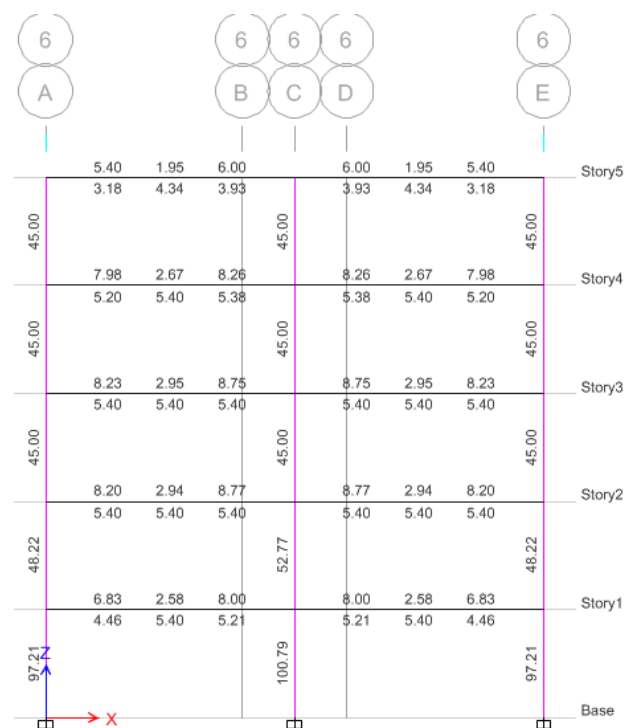
Pórtico del eje 3-3



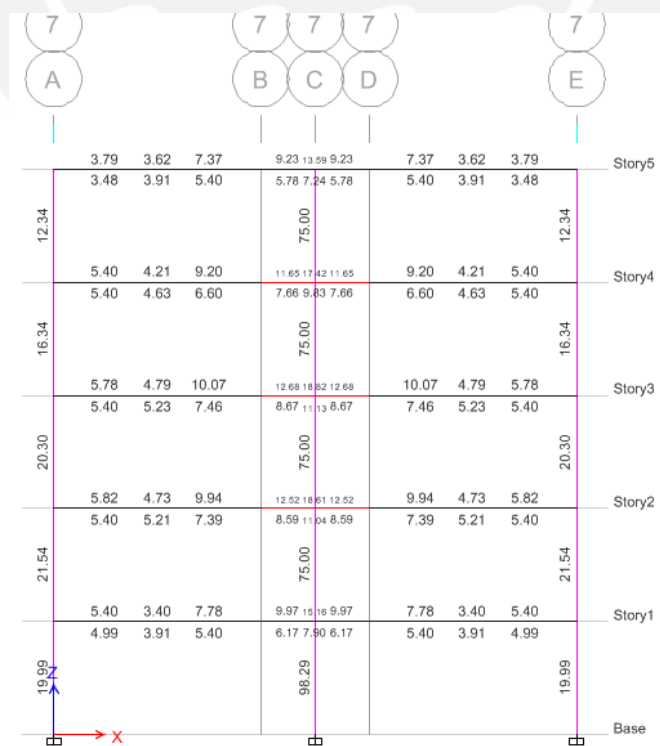
Pórtico del eje 4-4



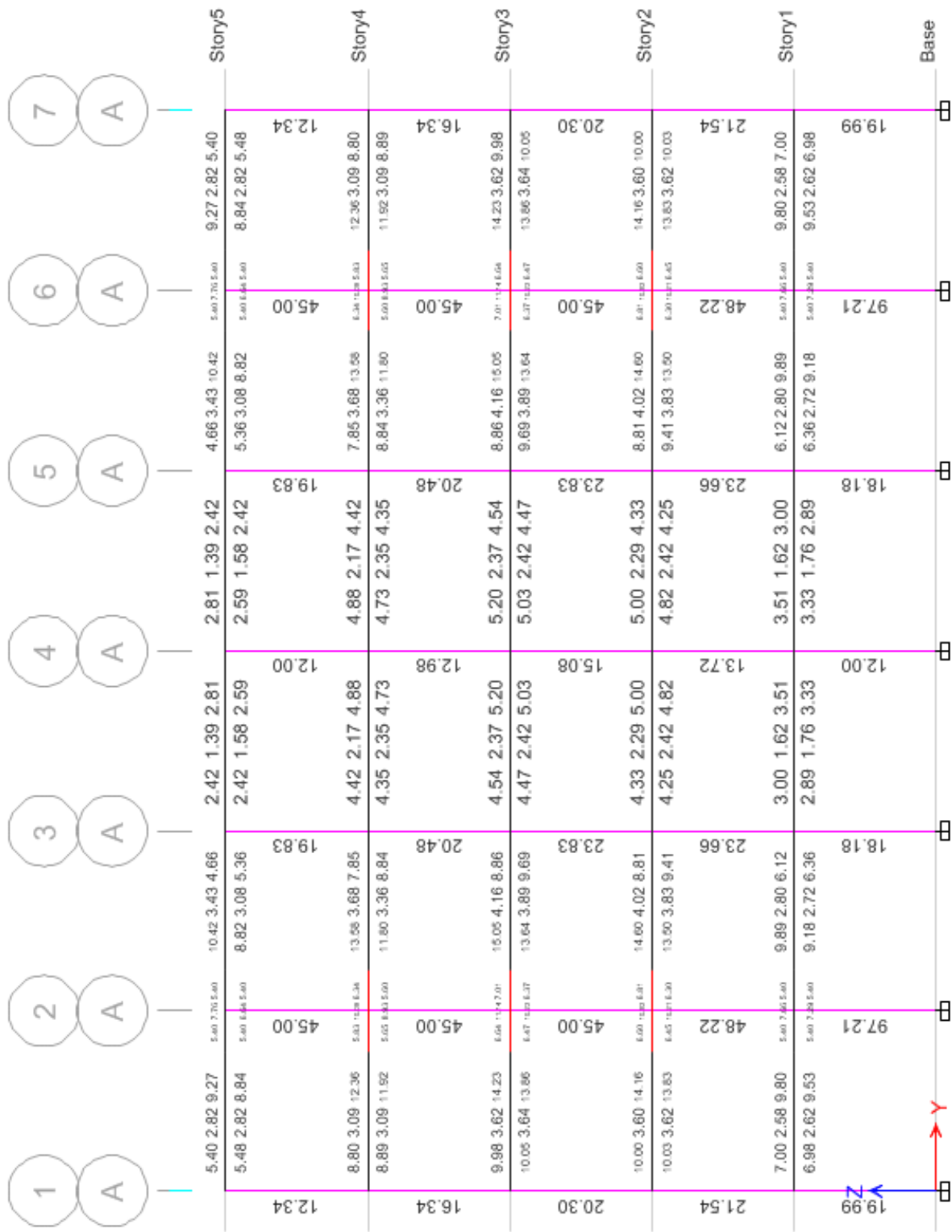
Pórtico del eje 5-5



Pórtico del eje 6-6

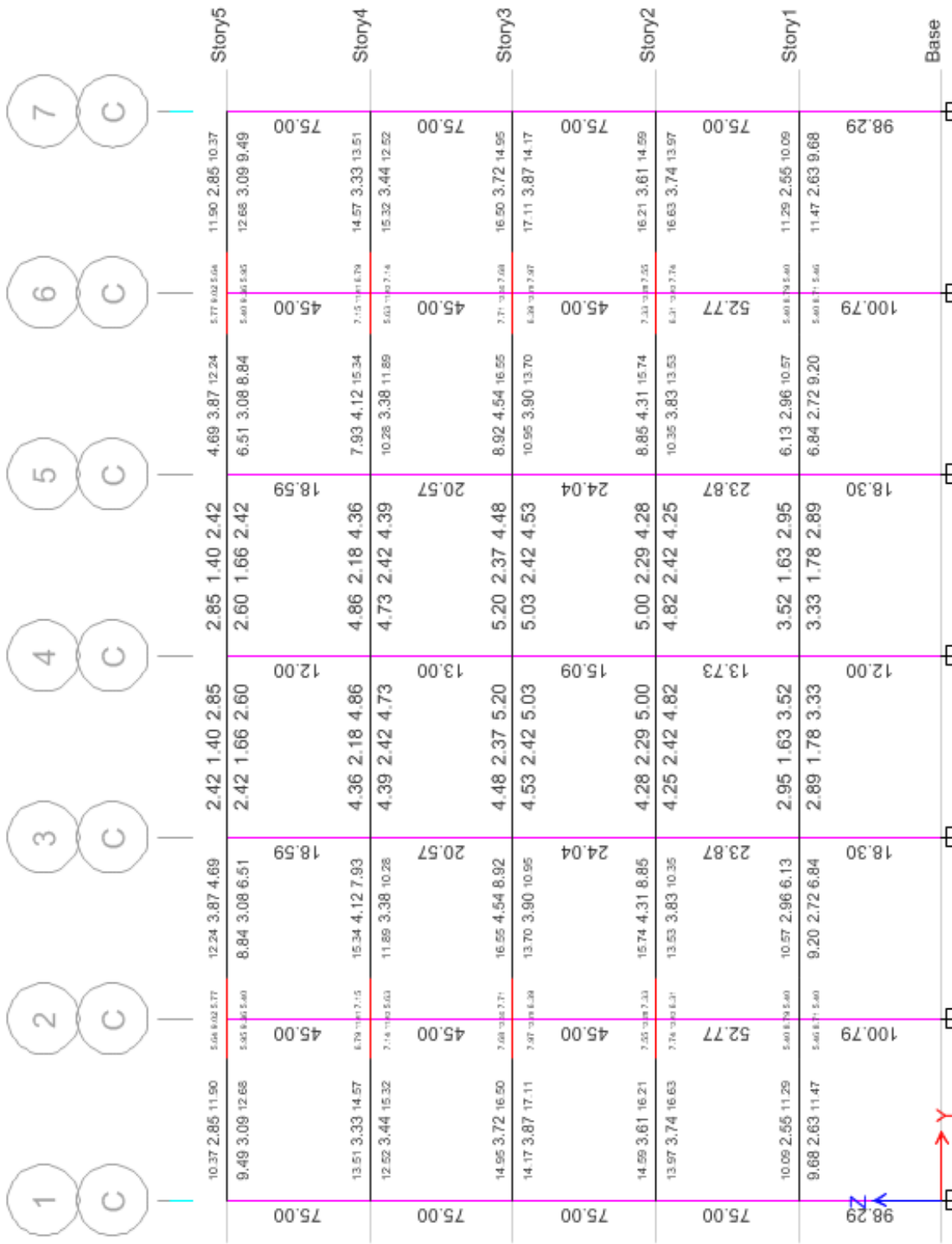


Pórtico del eje 7-7

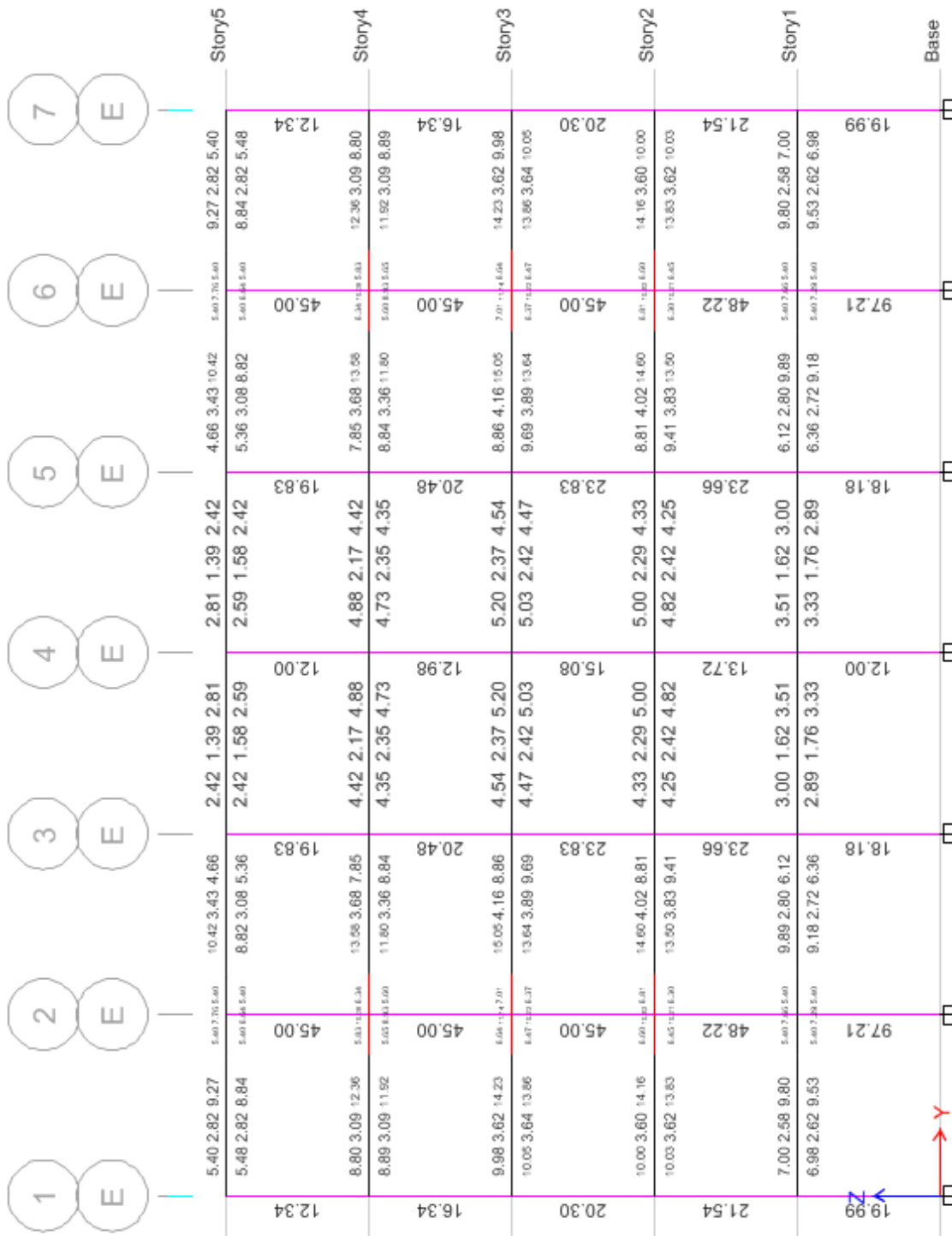


Pórtico del eje A-A





Pórtico del eje C-C



Pórtico del eje E-E