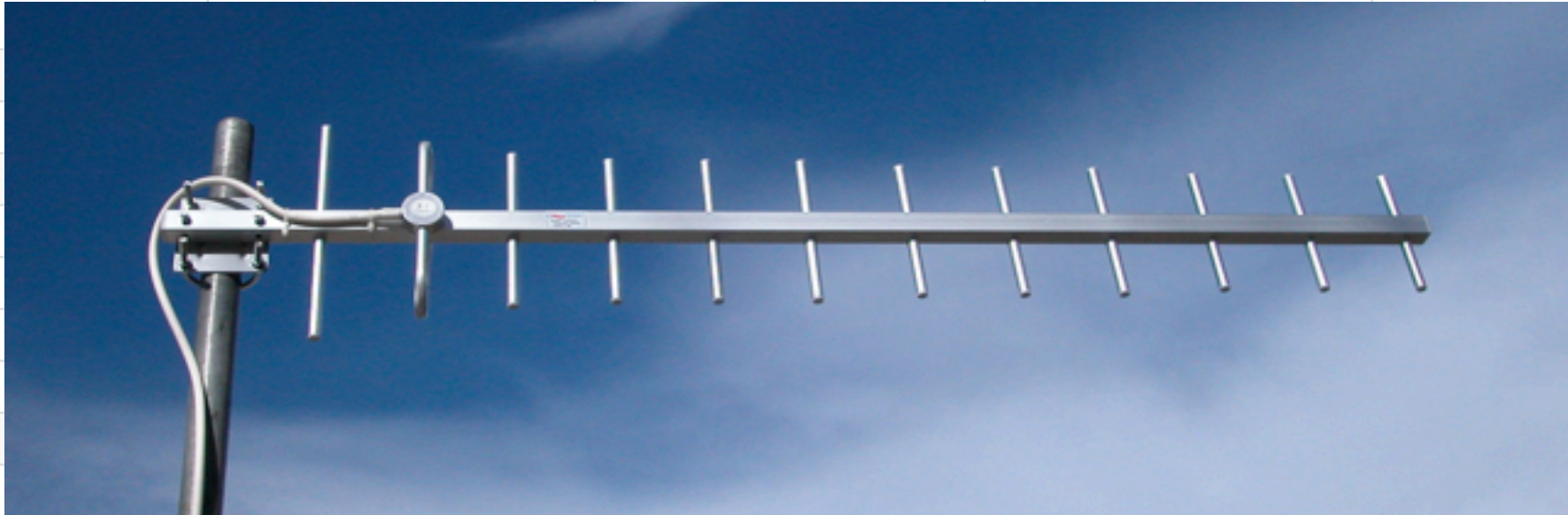


YAGI ANTENNA 512-698 MHz



Sturdy Construction with true to specification RF performance



FEATURES	Industrial Strength Aluminum Construction	Steel U Bolts and SS Hardware	Lifetime Warranty Female N Connector	Vertical or Horizontal Polarization
	PVC Heat Shrink on Connector	Waterproof Gamma Match	High Quality LMR400 Cable	Photo 900 MHz yagi
	Solid Metal Mounting Bracket			www.dmswireless.com
SPECIFICATIONS				
Part Number	YA512/60813	YA614/69813	YA560/65013	YA626/69210
Frequency Range	512 - 608 MHz	614 - 698 MHz	560 - 650 MHz	626-692 MHz
Gain	13	13	13	10
Front to Back Ratio	≥15db	≥15db	≥15db	≥15db
Beamwidth	H40 V35	H40 V35	H40 V35	H68 V52
VSWR	1.5:1 Typical	1.5:1 Typical	1.5:1 Typical	1.5:1 Typical
Input Impedance	50 Ohms	50 Ohms	50 Ohms	50 Ohms
Maximum Power	100 Watts	100 Watts	100 Watts	100 Watts
Connector Interface	N Type Female	N Type Female	N Type Female	N Type Female
Windload	210 kmp/130 mph	210 kmp/130 mph	210 kmp/130 mph	210 kmp/130 mph
Polarization	Vertical or Horizontal	Vertical or Horizontal	Vertical or Horizontal	Vertical or Horizontal
Lightning Protection	Direct Ground	Direct Ground	Direct Ground	Direct Ground
Structure	11 Elements	11 Elements	11 Elements	7 Elements
Length	40.6" / 1030 mm	40.6" / 1030 mm	40.6" / 1030 mm	31.9" / 810 mm
Weight	2.16 lb / 0.98 kg	2.16 lb / 0.98 kg	2.16 lb / 0.98 kg	1.65 lb / 0.75 kg
Mast Sizes Compatible	1.0"-2.0" 28-52 mm	1.0"-2.0" 28-52 mm	1.0"-2.0" 28-52 mm	1.0"-2.0" 28-52 mm
Double U Bolt Mounting	S/S Hardware	S/S Hardware	S/S Hardware	S/S Hardware
Standard Cable Length	2'/610 mm	2'/610 mm	2'/610 mm	2'/610 mm